



Lot 2B

370 Wareham St - Rte 28
Middleboro, MA

For Lease at \$18.50/SF Plus Utilities

Industrial Space Available | Ranging from 11,469± SF to 19,717±SF

Jody Shaw
Greg Hartel

508-566-3556 Jody@HartelRealty.com
617-256-3169 Greg@HartelRealty.com



HARTEL COMMERCIAL REAL ESTATE
Falmouth ~ Quincy



**Fully Approved for
Marijuana Grow**

**POTENTIAL TO SUBDIVIDE
AND BUILD TO SUIT**

Property Summary

Space Available -11,469± SF to 19,717± SF

15.21± Acre Site - Lot 2B

Ample Parking

Approved For: 14 x 14 Overhead Doors

Private Bath in Unit

3 Phase Electric - Gas Heat

Floor Drains into Tight Tanks w/Septic

Fully Sprinkled

General Use Zoning & Located in CBD Zone

Close to Interstate 495 & Direct Location on Route 28

For Lease at \$18.50/SF Plus Utilities

370 Wareham St - Rte 28 - Middleboro, MA

For Lease at \$18.50/SF Plus Utilities

4 INDUSTRIAL BUILDINGS
TOTALING 76,519± SF

Available Units

Building 9

17,368± SF

Building 11

11,469± SF

Building 13

19,717± SF

Building 15

19,717± SF

**Fully Approved for
Marijuana Grow**

POTENTIAL TO SUBDIVIDE
AND BUILD TO SUIT

Sale Information

Lot 2B - 15.21± Acres - **\$17,000,000**

* 4 Industrial Buildings 76,519± SF

Lot 3A - 9.39± Acres - **\$2,100,000**

* Approved for 3 Industrial Buildings
44,295± SF

Entire Property - 25.82± Acres -
\$19,100,000

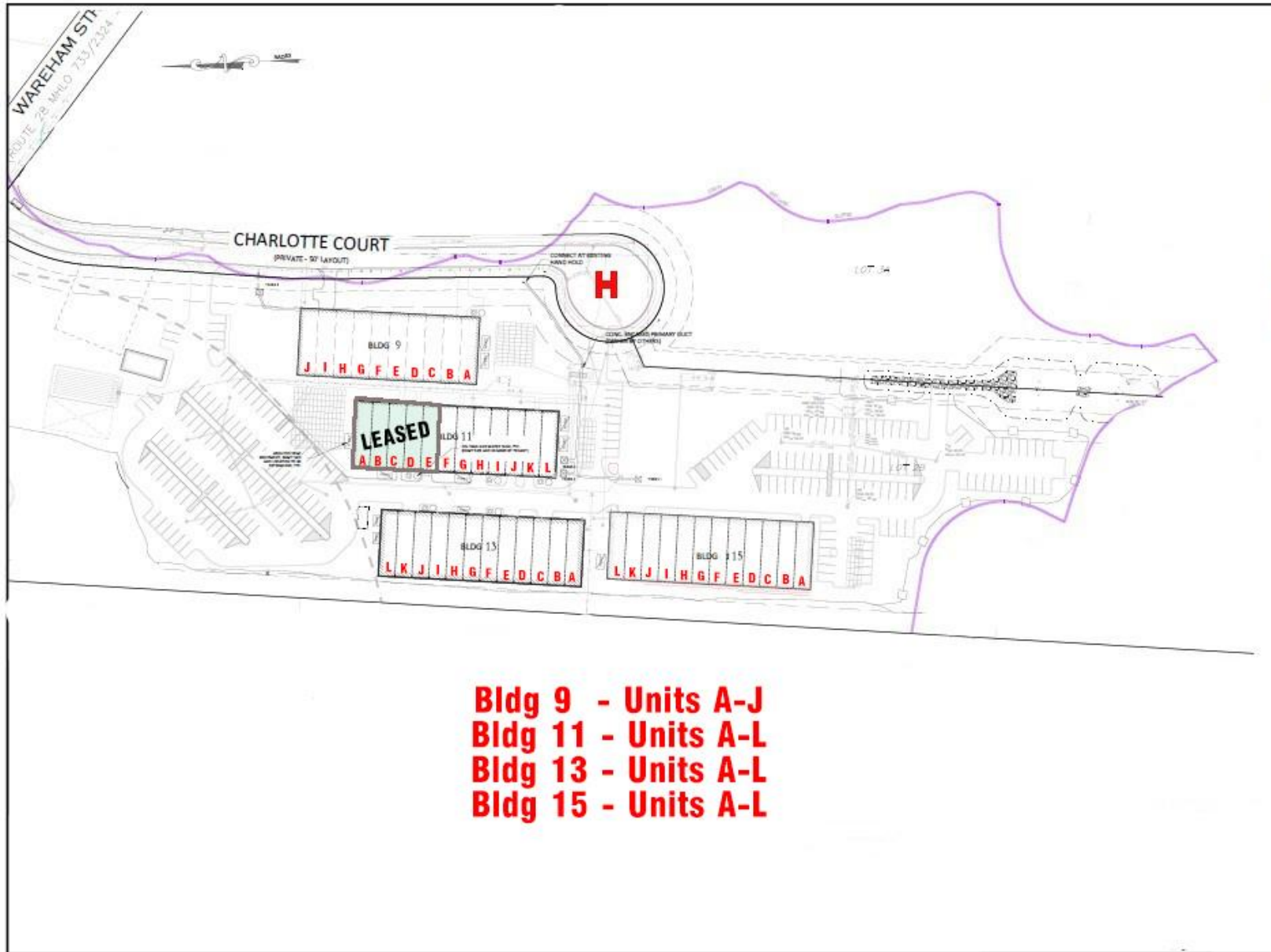
* Lot 2B - 4 Industrial Buildings
76,519± SF

* Approved for 3 Industrial Buildings
44,295± SF

Fully Approved for Marijuana Grow

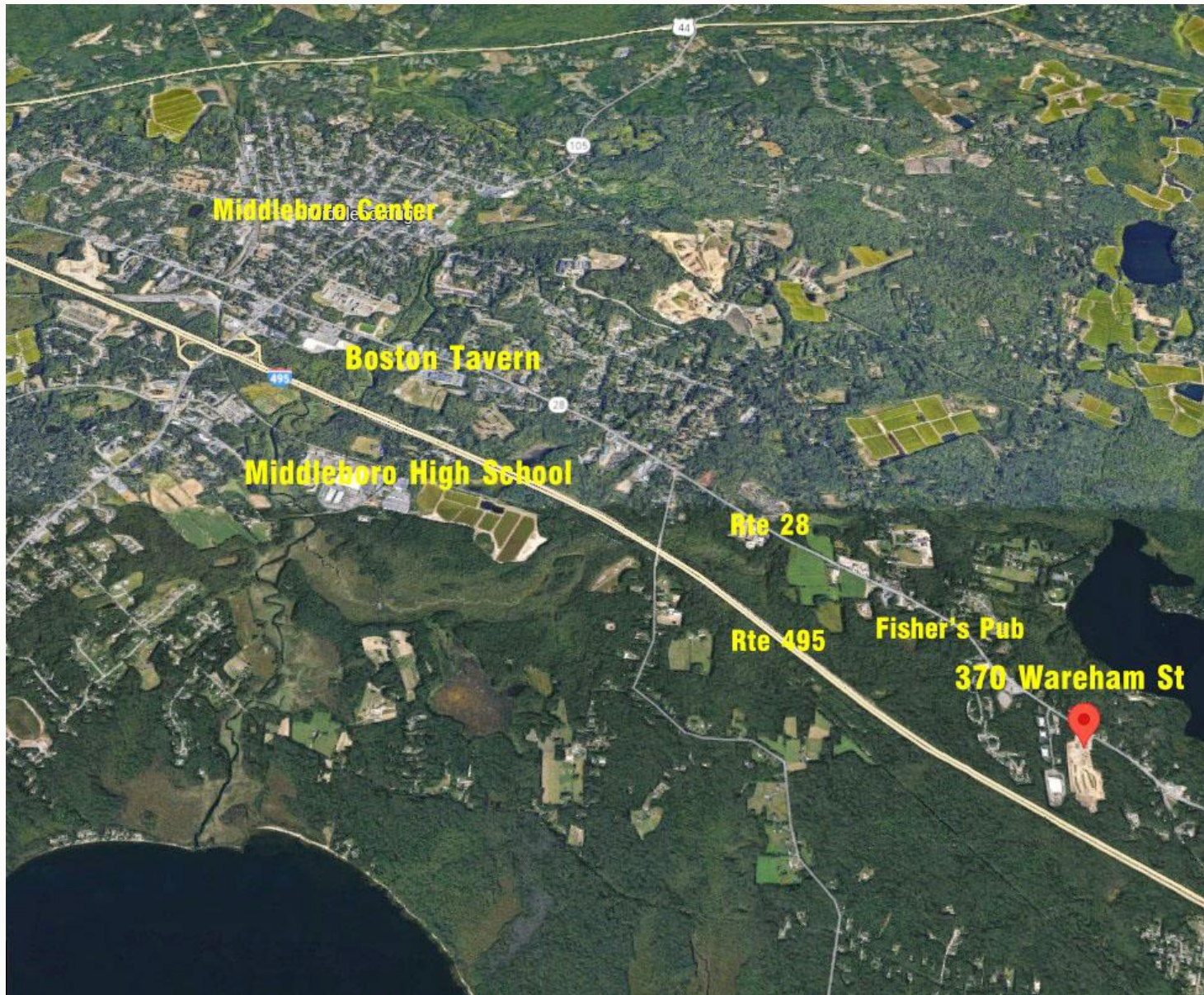
Potential to Subdivide and Build to Suit

370 Wareham St - Rte 28 - Middleboro, MA



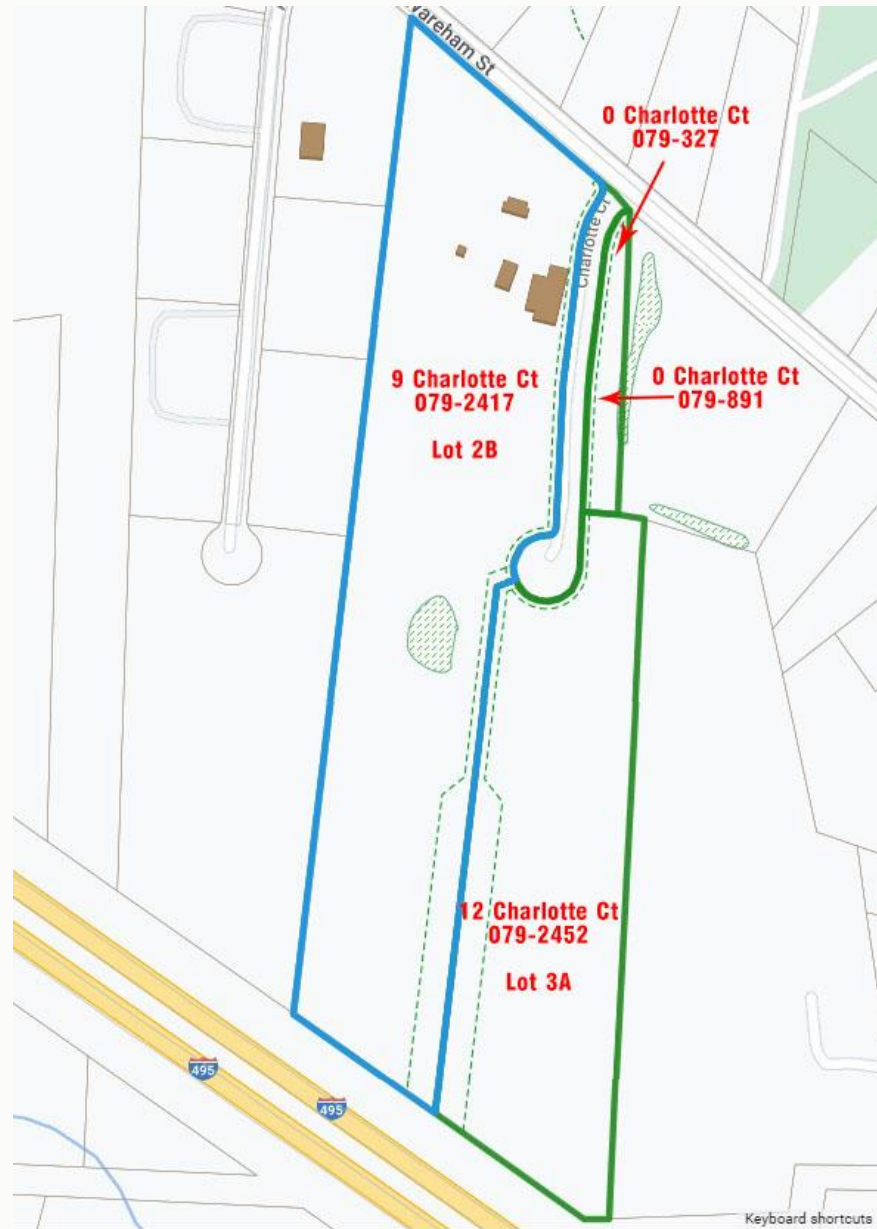
Site Plan - Unit Allocation

370 Wareham St - Rte 28 - Middleboro, MA



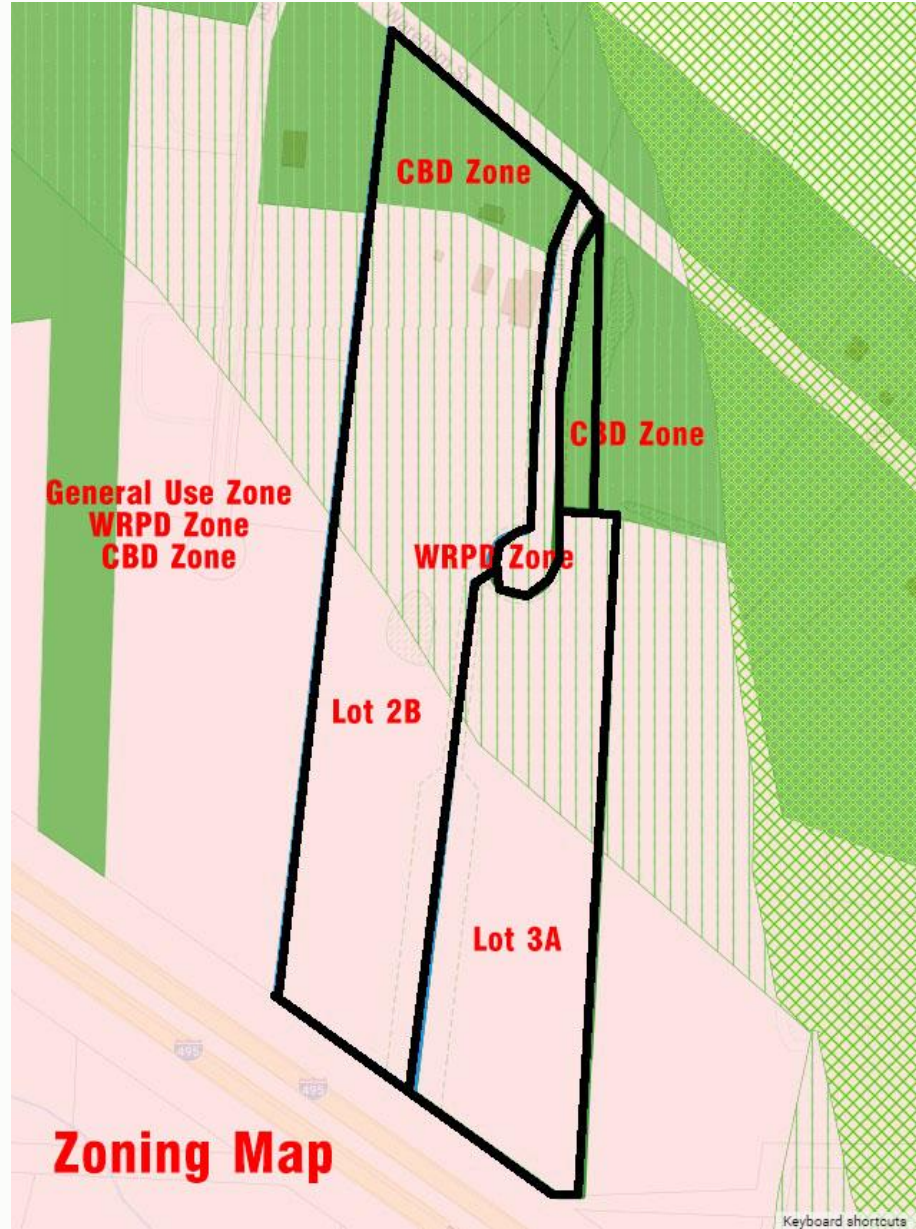
Neighborhood

370 Wareham St - Rte 28 - Middleboro, MA



Assessor

370 Wareham St - Rte 28 - Middleboro, MA



Zoning - General Use/WRPD/CBD

370 Wareham St - Rte 28 - Middleboro, MA



370 Wareham St - Rte 28 - Middleboro, MA



370 Wareham St - Rte 28 - Middleboro, MA



370 Wareham St - Rte 28 - Middleboro, MA



370 Wareham St - Rte 28 - Middleboro, MA



370 Wareham St - Rte 28 - Middleboro, MA



370 Wareham St - Rte 28 - Middleboro, MA

HARTEL COMMERCIAL REAL ESTATE
FALMOUTH - QUINCY

230 Jones Road
Suite 6
Falmouth MA 02540

Greg Hartel
617-256-3169
Greg@HartelRealty.com

Jody Shaw
508-566-3556
Jody@HartelRealty.com

Main Office
508-444-0172
www.HartelRealty.com

Contacts

***DISCLAIMER:** ALL INFORMATION CONTAINED HEREIN WAS RESEARCHED AND OBTAINED BY SOURCES DEEMED TO BE RELIABLE. WE MAKE NO REPRESENTATION OR WARRANTIES OF ANY KIND DUE TO THE ACCURACY CONTAINED WITHIN THIS LISTING. PLEASE CONDUCT YOUR OWN RESEARCH OF THE PROPERTY TO VERIFY ANY AND ALL INFORMATION. WE ARE NOT RESPONSIBLE FOR ANY INFORMATION WHICH IS RELIED UPON WITHOUT FURTHER DUE DILIGENCE AND INVESTIGATION.