



HARTEL REALTY

Strategic Real Estate Services

FOR LEASE - \$1,300/mo. (includes utilities)

900 +/- SF Office Suite

919 Main Street, Osterville, MA



- Established Commercial Location
- Proximity to Downtown Osterville, Route 28
- Prominent Visibility, High Traffic Area

HARTEL REALTY

230 Jones Road, Unit 6, Falmouth, MA 02540

Main: (508) 444-0172 ♦ Cell: (617) 256-3169 ♦ Fax: (508) 548-2995

email: greg@hartelrealty.com

www.hartelrealty.com



HARTEL REALTY

Strategic Real Estate Services

Executive Summary

Property Address: 919 Main Street, Osterville, MA

Unit # Lower Level

Property type: Office Suite

Rent: \$1,300/mo.

Lease Type: Gross (utilities included)

Date Available: Immediate

Unit Size: 900 +/- SF

HARTEL REALTY

230 Jones Road, Unit 6, Falmouth, MA 02540

Main: (508) 444-0172 ♦ Cell: (617) 256-3169 ♦ Fax: (508) 548-2995

email: greg@hartelrealty.com

www.hartelrealty.com



HARTEL REALTY

Strategic Real Estate Services

Detailed Summary

Total Room Count in Suite	4
Private or Common Bathrooms	Common
Floor Levels	Lower Level
Parking Reserved for Unit	Two spaces
Town Sewer or Private Septic	Septic
Town Water or Well	Town
Kitchen	Shared/Gourmet
Additional Information	Shared Conference Room
Heating Type	Natural Gas, FHA
Air Conditioning	Yes
Handicapped Access	No
Foyer (Y/N)	Yes

HARTEL REALTY

230 Jones Road, Unit 6, Falmouth, MA 02540

Main: (508) 444-0172 ♦ Cell: (617) 256-3169 ♦ Fax: (508) 548-2995

email: greg@hartelrealty.com

www.hartelrealty.com



HARTEL REALTY

Strategic Real Estate Services

Property Description

General Site Overview:

Osterville is one of the seven villages of Barnstable. With seventeen miles of shoreline, Osterville was well known in early years for both ship building and salt production. The village of Osterville is a charming, year-round attraction and boasts many successful businesses and restaurants. Beautiful beaches, prestigious golf courses and unique shops make this corner of the Cape a most sought after location.

Building Description:

919 Main Street is an 18th century structure that was at one time a private home. In recent years, the building has been fully renovated, including a gourmet kitchen, which is shared by tenants. Other common areas include; restrooms, conference room and parking.

Unit Details:

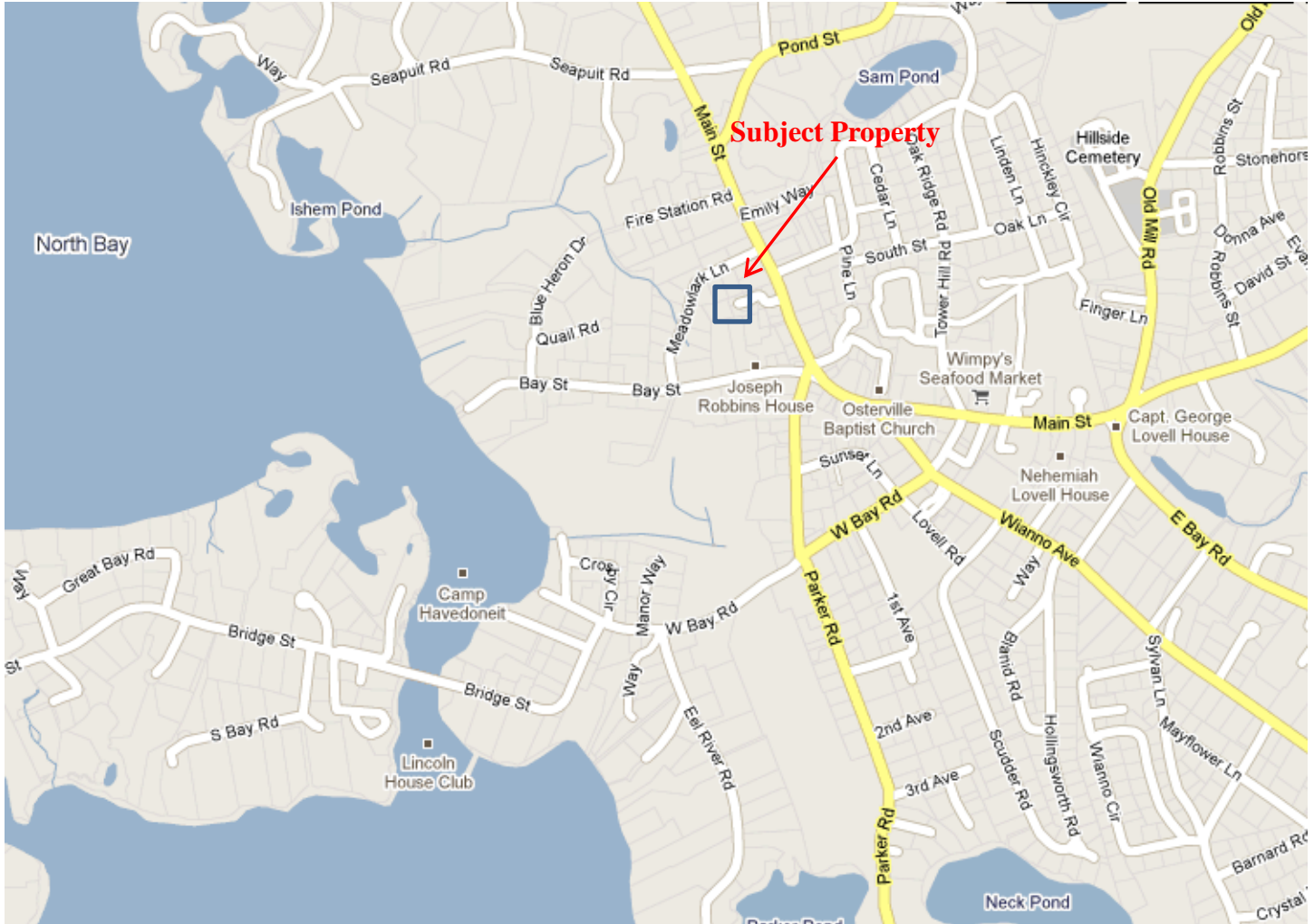
The lower level of 919 Main Street has its own separate entrance and hallway/foyer. The unit offers a large picture window at the entrance, French doors and several windows, along with storage closets and built-in shelves.



HARTEL REALTY

Strategic Real Estate Services

Area Map



HARTEL REALTY

230 Jones Road, Unit 6, Falmouth, MA 02540

Main: (508) 444-0172 ♦ Cell: (617) 256-3169 ♦ Fax: (508) 548-2995

email: greg@hartelrealty.com

www.hartelrealty.com



HARTEL REALTY

Strategic Real Estate Services

Aerial View



HARTEL REALTY

230 Jones Road, Unit 6, Falmouth, MA 02540

Main: (508) 444-0172 ♦ Cell: (617) 256-3169 ♦ Fax: (508) 548-2995

email: greg@hartelrealty.com

www.hartelrealty.com

6 of 9

919 Main Street, Osterville



HARTEL REALTY

Strategic Real Estate Services

Photos



Private Entrance



Parking Area

HARTEL REALTY
230 Jones Road, Unit 6, Falmouth, MA 02540
Main: (508) 444-0172 ♦ Cell: (617) 256-3169 ♦ Fax: (508) 548-2995
email: greg@hartelrealty.com
www.hartelrealty.com



HARTEL REALTY

Strategic Real Estate Services

Photos



Kitchen



Conference
Room



HARTEL REALTY

Strategic Real Estate Services

Photos



HARTEL REALTY

230 Jones Road, Unit 6, Falmouth, MA 02540

Main: (508) 444-0172 ♦ Cell: (617) 256-3169 ♦ Fax: (508) 548-2995

email: greg@hartelrealty.com

www.hartelrealty.com

9 of 9

919 Main Street, Osterville



HARTEL REALTY

Strategic Real Estate Services

Photos

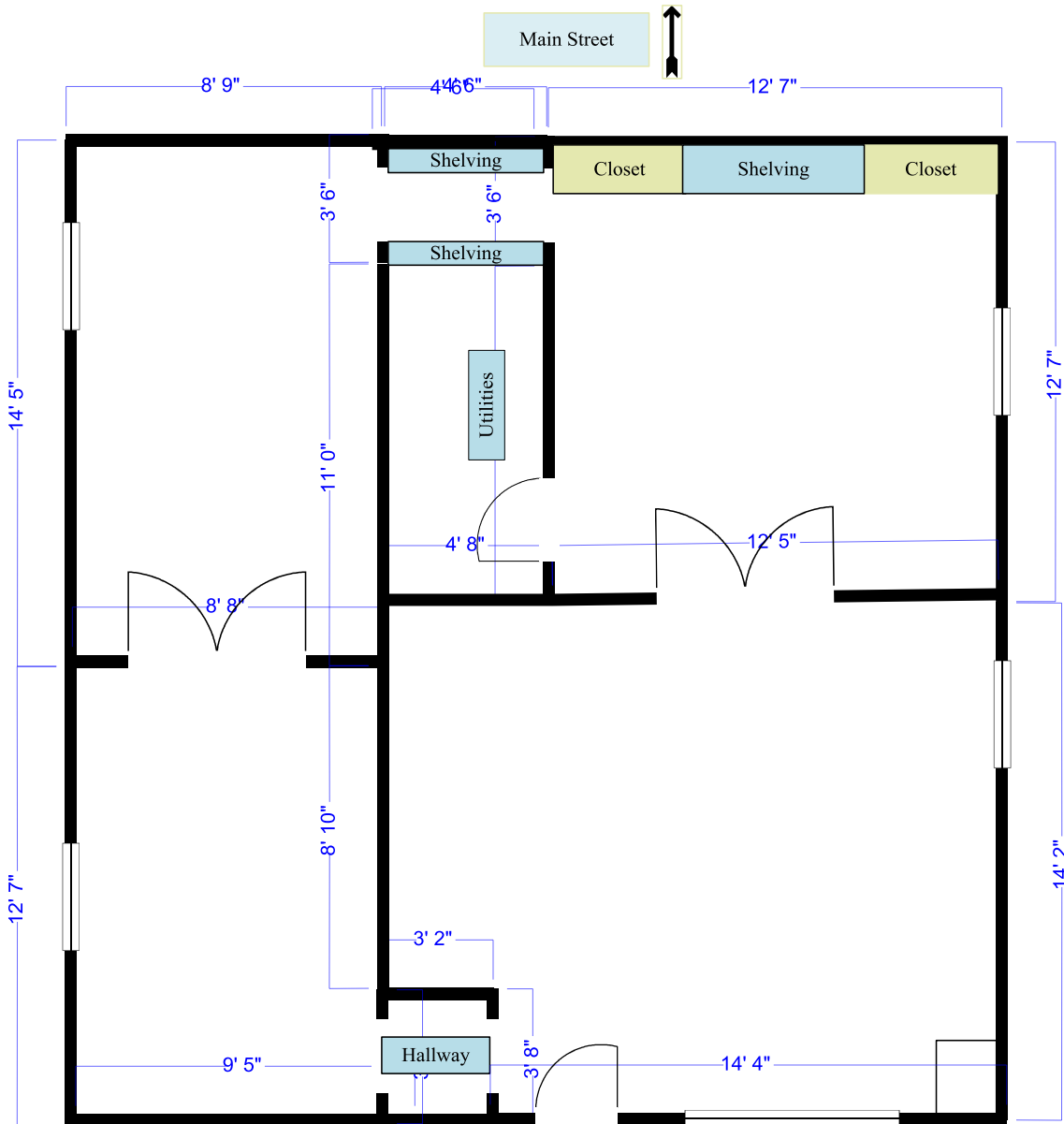


HARTEL REALTY
230 Jones Road, Unit 6, Falmouth, MA 02540
Main: (508) 444-0172 ♦ Cell: (617) 256-3169 ♦ Fax: (508) 548-2995
email: greg@hartelrealty.com
www.hartelrealty.com



HARTEL REALTY

Strategic Real Estate Services



Floor Plan

Please note that measurements are approximate and provided for informational purposes only. Drawings are not to scale

