



HARTEL COMMERCIAL

Strategic Real Estate Services

FOR LEASE - \$1,800/mo.

825 +/- SF Office - Unit 2

1895 Centre Street, West Roxbury, MA



- Downtown West Roxbury
- Vibrant Business Neighborhood
- Maximum Visibility, Signage
- Plenty of Onsite Parking

HARTEL COMMERCIAL

230 Jones Road, Unit 6, Falmouth, MA 02540

Main: (508) 444-0172 ♦ Cell: (617) 256-3169 ♦ Fax: (508) 548-2995

email: Greg@HartelRealty.com

www.HartelRealty.com



HARTEL COMMERCIAL

Strategic Real Estate Services

Executive Summary

Property Address: 1895 Centre Street, West Roxbury, MA

Unit # 2

Property type: Office

Rent: \$1,800/mo.

Lease Type: Full Service

Date Available: Immediate

Unit Size: 825 +/- SF



HARTEL COMMERCIAL

Strategic Real Estate Services

Detailed Summary

Total Room Count in Suite	4
Private or Common Bathrooms	Common Hallway
Floor Levels	Mezzanine
Parking for Unit	Paved Lot
Town Sewer or Private Septic	Town Sewer
Town Water or Well	Town Water



HARTEL COMMERCIAL

Strategic Real Estate Services

Property Description

General Area Overview:

West Roxbury is a neighborhood of Boston bordered by Roslindale to the northeast, the Town of Dedham to the west and south, the Town of Brookline to the north, and the Towns of Needham and City of Newton to the west. West Roxbury's main thoroughfare is Centre Street, lined with local restaurants and commercial establishments; it is often referred to as a suburb within the city. Today, the neighborhood's tree-lined streets and mostly single family homes give it a suburban feel in an urban setting. Life in the neighborhood centers on civic activism, local politics, parishes and youth athletic leagues.

Neighborhood Description:

1895 Centre Street is located in the heart of West Roxbury and is surrounded by parks, golf courses and green space. The building is on the corners of Hastings and Park. This city within a city boasts restaurants, retail and professional spaces up and down busy Centre Street, the main road through the village.

Unit Details:

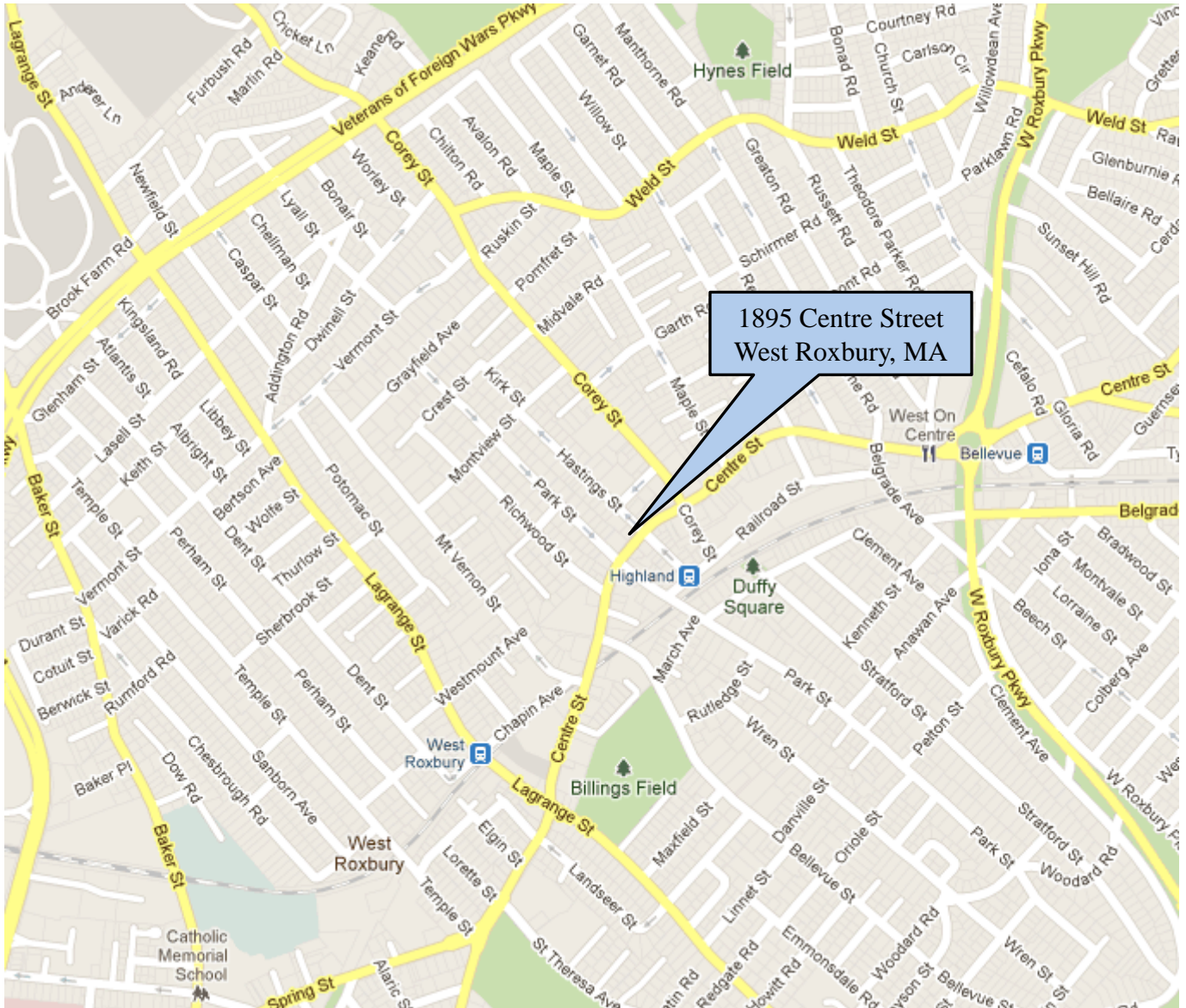
Fantastic Mezzanine suite - walls of windows overlook Centre Street and the unique floor plan is perfect for any office setting. 825 +/- SF, upper level, common restrooms. Onsite parking, plus municipal lot next door.



HARTEL COMMERCIAL

Strategic Real Estate Services

Area Map



1895 Centre Street
West Roxbury, MA

HARTEL COMMERCIAL

230 Jones Road, Unit 6, Falmouth, MA 02540

Main: (508) 444-0172 ♦ Cell: (617) 256-3169 ♦ Fax: (508) 548-2995

email: Greg@HartelRealty.com

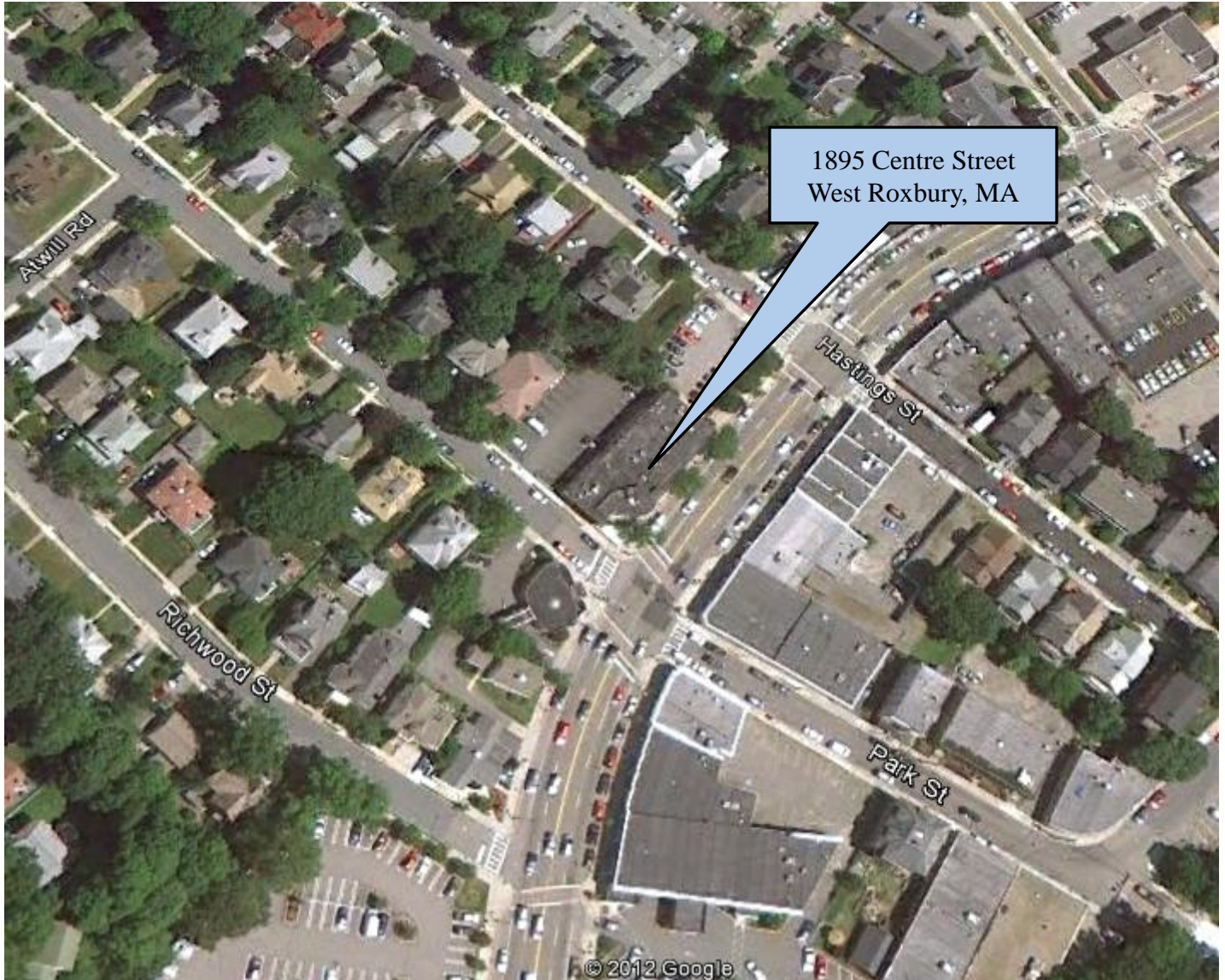
www.HartelRealty.com



HARTEL COMMERCIAL

Strategic Real Estate Services

Aerial View



HARTEL COMMERCIAL

230 Jones Road, Unit 6, Falmouth, MA 02540

Main: (508) 444-0172 ♦ Cell: (617) 256-3169 ♦ Fax: (508) 548-2995

email: Greg@HartelRealty.com

www.HartelRealty.com



HARTEL COMMERCIAL

Strategic Real Estate Services



HARTEL COMMERCIAL
230 Jones Road, Unit 6, Falmouth, MA 02540
Main: (508) 444-0172 ♦ Cell: (617) 256-3169 ♦ Fax: (508) 548-2995
email: Greg@HartelRealty.com
www.HartelRealty.com



HARTEL COMMERCIAL

Strategic Real Estate Services



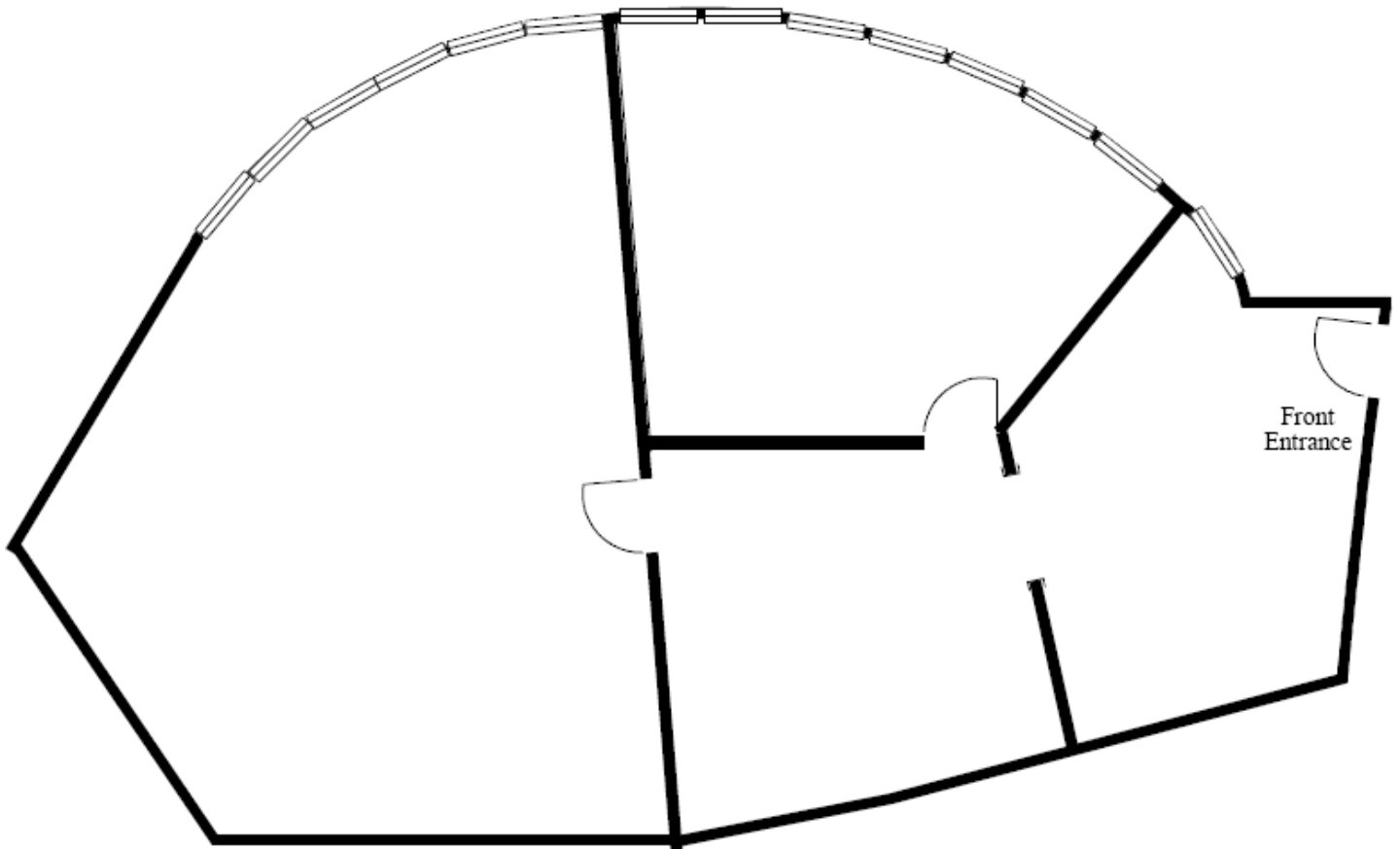
HARTEL COMMERCIAL
230 Jones Road, Unit 6, Falmouth, MA 02540
Main: (508) 444-0172 ♦ Cell: (617) 256-3169 ♦ Fax: (508) 548-2995
email: Greg@HartelRealty.com
www.HartelRealty.com



HARTEL COMMERCIAL

Strategic Real Estate Services

Floor Plan



*Please note that measurements
are approximate and provided
for informational purposes only.
Drawings are not to scale*

HARTEL COMMERCIAL
230 Jones Road, Unit 6, Falmouth, MA 02540
Main: (508) 444-0172 ♦ Cell: (617) 256-3169 ♦ Fax: (508) 548-2995
email: Greg@HartelRealty.com
www.HartelRealty.com