



# HARTEL COMMERCIAL REAL ESTATE

Strategic Real Estate Services

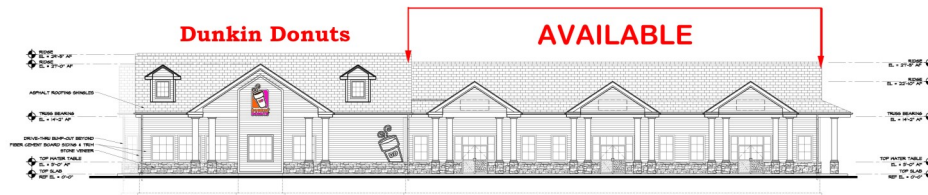
**FOR LEASE - NEW RETAIL SPACE**

**Join New Dunkin Donuts Development**

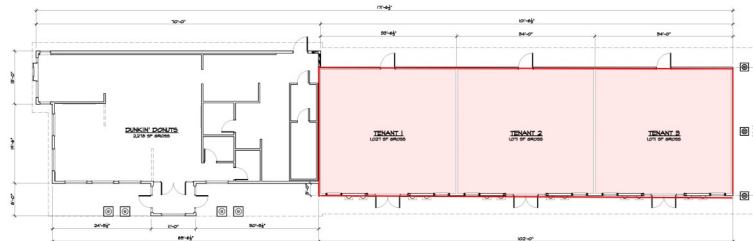
**\$16/SF NNN - 1,027 SF to 3,169 SF**

**SANDWICH ROAD - ROUTE 151 JUNCTION**

**Falmouth, MA**



2 PROPOSED FRONT ELEVATION  
SCALE 1/8" = 1'-0"



1 PROPOSED FLOOR PLAN  
SCALE 1/8" = 1'-0"

- \* 3 Spaces Available
- \* Intersection of Sandwich Road & Route 151 - Neighbors Busy Gas Station
- \* Owner will work to finalize front façade look
- \* Close Proximity to Falmouth - Otis Air Base Entrance



Hartel Commercial Real Estate

230 Jones Rd/Ste 6/Falmouth, MA  
40 Willard St/Ste 207/Quincy, MA



# HARTEL COMMERCIAL REAL ESTATE

Strategic Real Estate Services

## SATELLITES



Hartel Commercial Real Estate

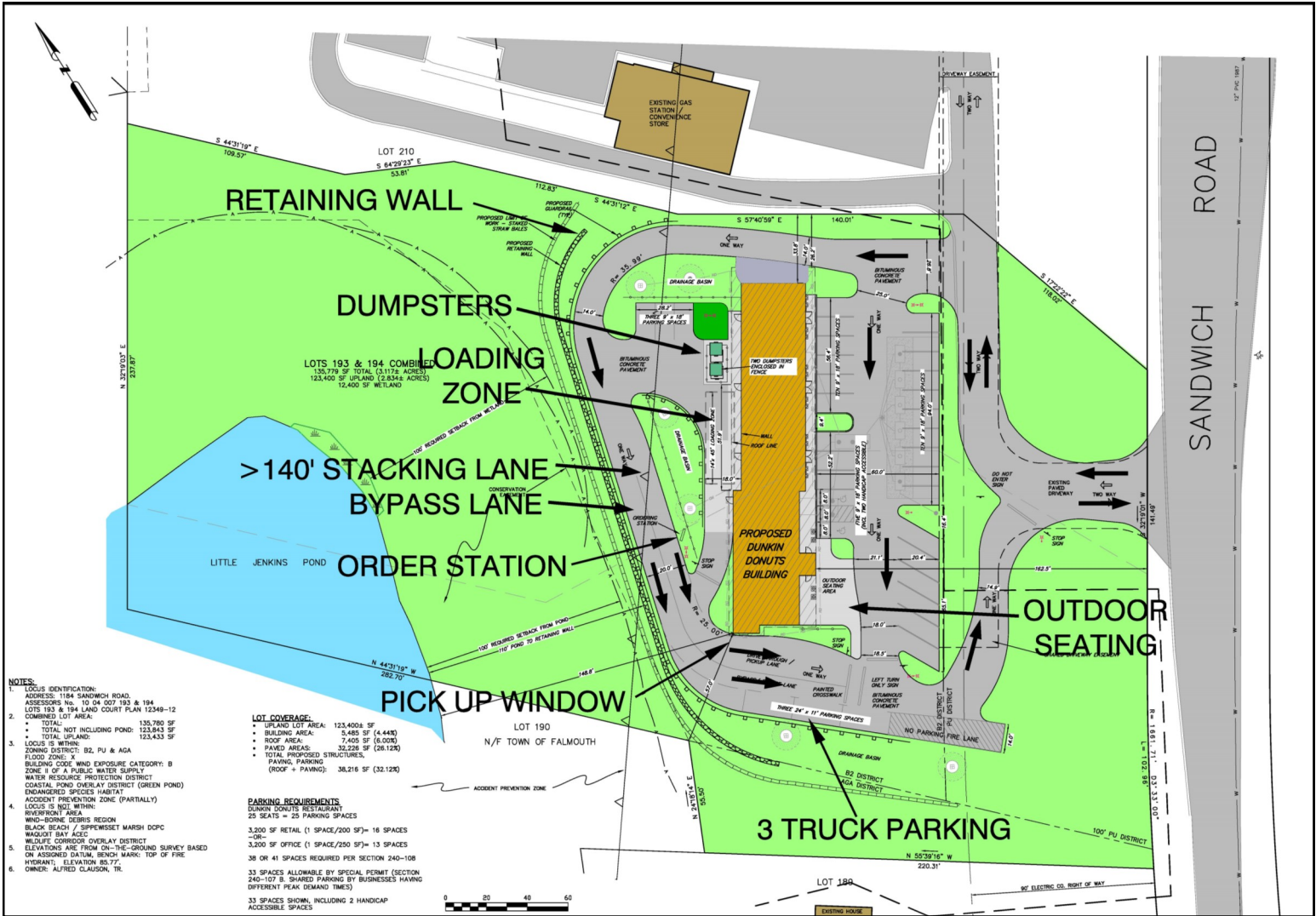
230 Jones Rd/Ste 6/Falmouth, MA  
40 Willard St/Ste 207/Quincy, MA



# HARTEL COMMERCIAL REAL ESTATE

Strategic Real Estate Services

## CONCEPTUAL PLAN



Hartel Commercial Real Estate

230 Jones Rd/Ste 6/Falmouth, MA  
40 Willard St/Ste 207/Quincy, MA

Greg Hartel

617-256-3169

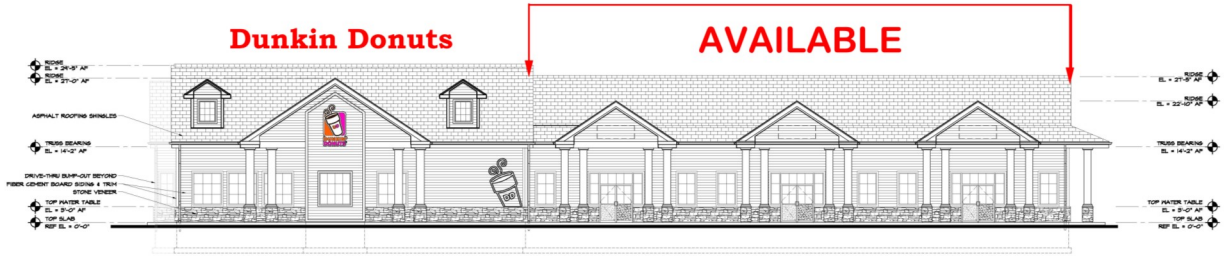
Greg@HartelRealty.com ~ Jody Shaw

508-566-3556

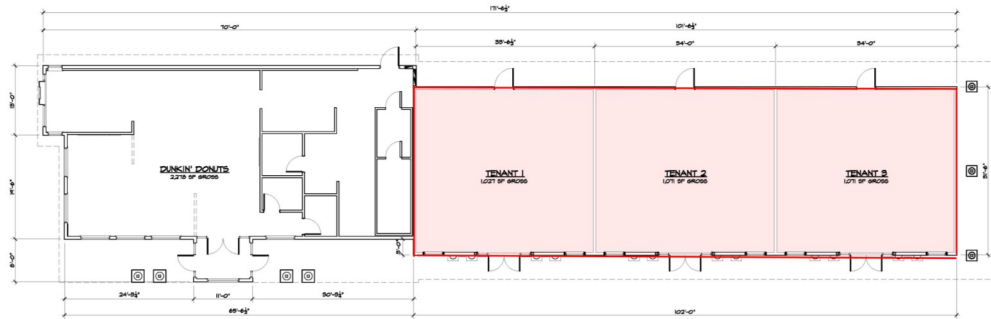
Jody@HartelRealty.com



## Floor Plan



2 PROPOSED FRONT ELEVATION  
SCALE: 1/8" = 1'-0"



1 PROPOSED FLOOR PLAN  
SCALE: 1/8" = 1'-0"  
PLAN

**Unit 1 - 1,027 SF**

**Unit 2 - 1,071 SF**

**Unit 3 - 1,071 SF**

**Total - 3,169 SF**



**Hartel Commercial Real Estate**

230 Jones Rd/Ste 6/Falmouth, MA  
40 Willard St/Ste 207/Quincy, MA



## ZONING MAP

