



HARTEL COMMERCIAL REAL ESTATE

Strategic Real Estate Services

180 Teaticket Highway aka Route 28

Driftwood Plaza

Leasing Opportunity



* **RENOVATIONS & UPDATES INCLUDE: NEW MECHANICALS, BATHS, ELECTRIC, FLOORING, NEW PAINT THROUGHOUT, LOBBY UPDATED, ROOF, STRUCTURAL IMPROVEMENTS, AND MORE!**

- * **SECOND FLOOR UNIT - MOVE IN READY - SUITE 2 - AVAILABLE NOW**
- * **ADJACENT TO CUMBERLAND FARMS GAS STATION AND CONVENIENCE STORE**
- * **ZONED B2- COMMERCIAL - YEAR ROUND ACTIVITY - HIGH VISIBILITY**

\$1,200/Mo - Plus Utilities - Long Term Lease - Available



HARTEL COMMERCIAL REAL ESTATE

230 Jones Road
Suite 6
Falmouth MA 02540

40 Willard Street
Suite 207
Quincy MA 02169

Greg Hartel
617-256-3169
Greg@HartelRealty.com

Jody Shaw
508-566-3556
Jody@HartelRealty.com

Main Office
508-444-0172
www.HartelRealty.com



HARTEL COMMERCIAL REAL ESTATE

Strategic Real Estate Services

Upper Floor Front Unit - Unit 2 - 1,300 SF \$1,200/Month Plus Utilities

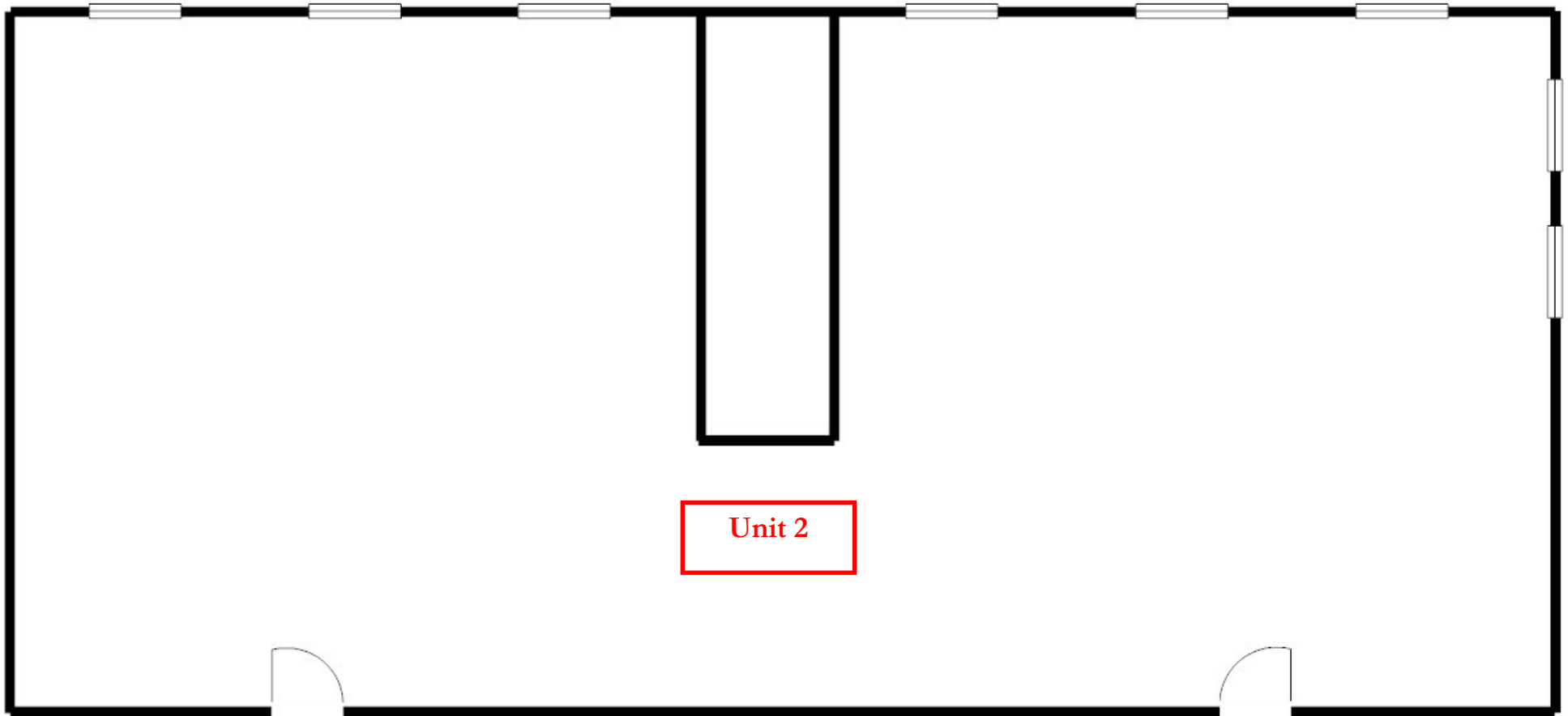




HARTEL COMMERCIAL REAL ESTATE

Strategic Real Estate Services

Floorplan - Unit 2 - 1,300 SF





HARTEL COMMERCIAL REAL ESTATE

Strategic Real Estate Services



Satellite View



HARTEL COMMERCIAL REAL ESTATE

230 Jones Road
Suite 6
Falmouth MA 02540

40 Willard Street
Suite 207
Quincy MA 02169

Greg Hartel
617-256-3169
Greg@HartelRealty.com

Jody Shaw
508-566-3556
Jody@HartelRealty.com

Main Office
508-444-0172
www.HartelRealty.com



HARTEL COMMERCIAL REAL ESTATE

Strategic Real Estate Services



Neighborhood View



HARTEL COMMERCIAL REAL ESTATE

230 Jones Road
Suite 6
Falmouth MA 02540

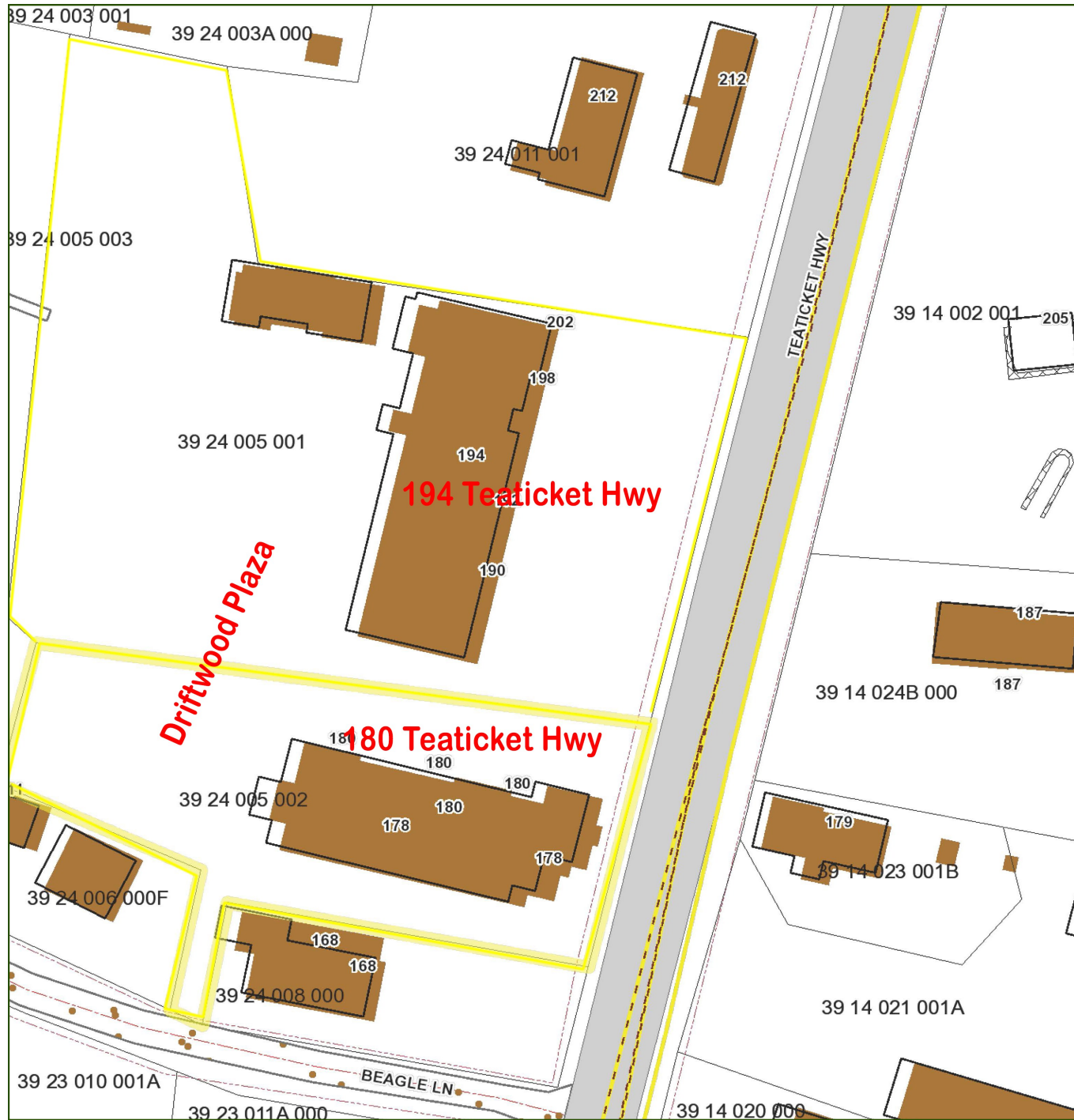
40 Willard Street
Suite 207
Quincy MA 02169

Greg Hartel
617-256-3169
Greg@HartelRealty.com

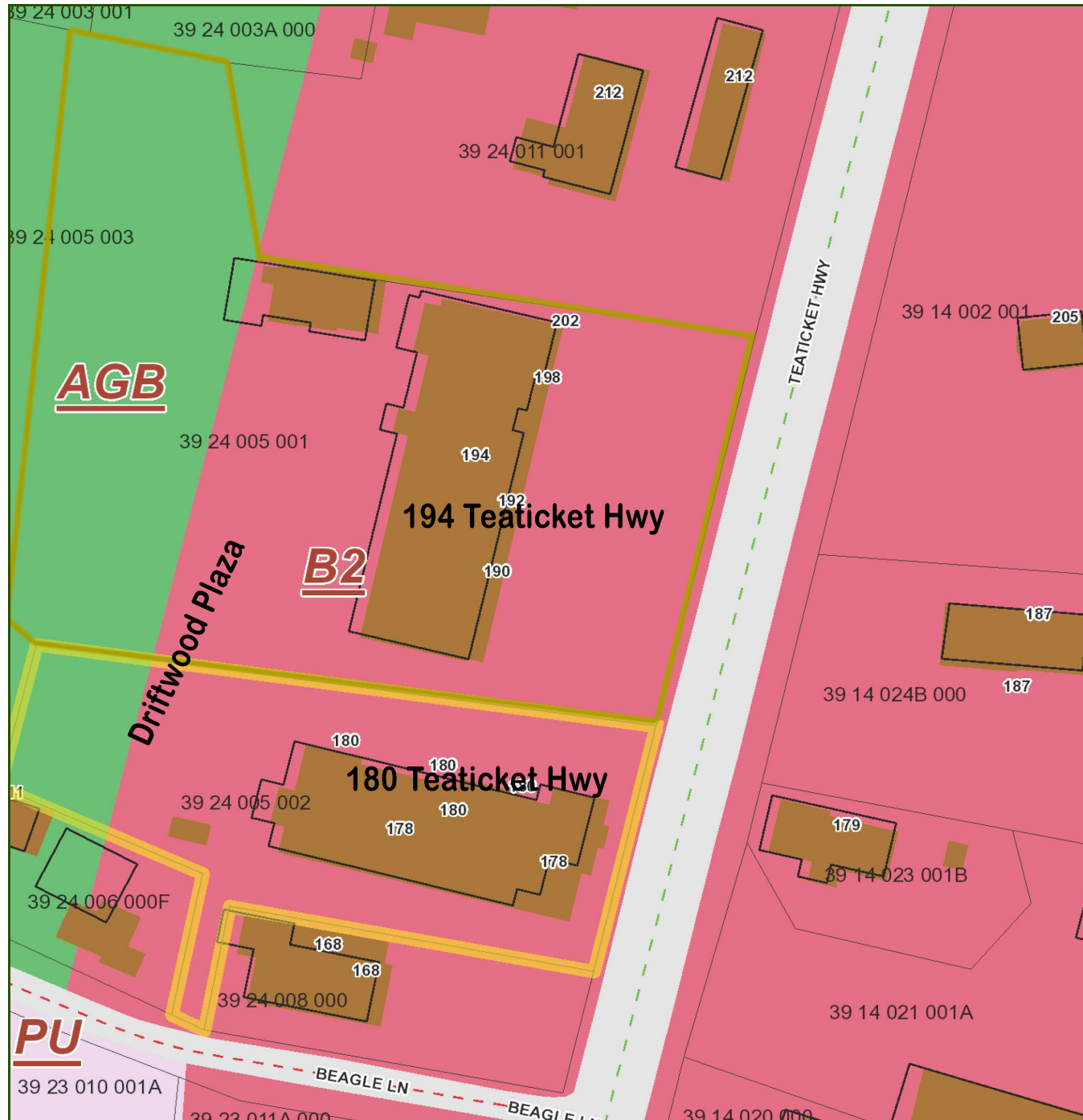
Jody Shaw
508-566-3556
Jody@HartelRealty.com

Main Office
508-444-0172
www.HartelRealty.com

Assessor Map



Zoning Map





HARTEL COMMERCIAL REAL ESTATE

Strategic Real Estate Services

180 Teaticket Hwy aka Rte 28 - East Falmouth

The unit is located in the Driftwood Plaza which is located in the Teaticket business district of East Falmouth in the town of Falmouth. There is one unit available in the 180 building which is located adjacent to the 194 building and also adjacent to the new Cumberland Farms gas station and convenience store. This is a high visibility, heavily traveled year round area. Complimentary businesses are located in the immediate neighborhood. Turnover is very low with tenants.

Long Term Lease - Available.

