



HARTEL COMMERCIAL REAL ESTATE

Strategic Real Estate Services

FALMOUTH

PROFESSIONAL COMMERCIAL LOCATION

Close to Major Highway & Downtown Falmouth

FOR LEASE - \$18/SF Plus Utilities

29 SIMPSON LANE - 1,500 SF ~ FALMOUTH, MA



- * Professional Commercial Space - Second Floor Location
- * Close to Major Highway/Downtown Falmouth/Bike Path
- * Space may be Divided
- * En Suite Kitchenette - Common Hall and Baths
- * On Site Parking

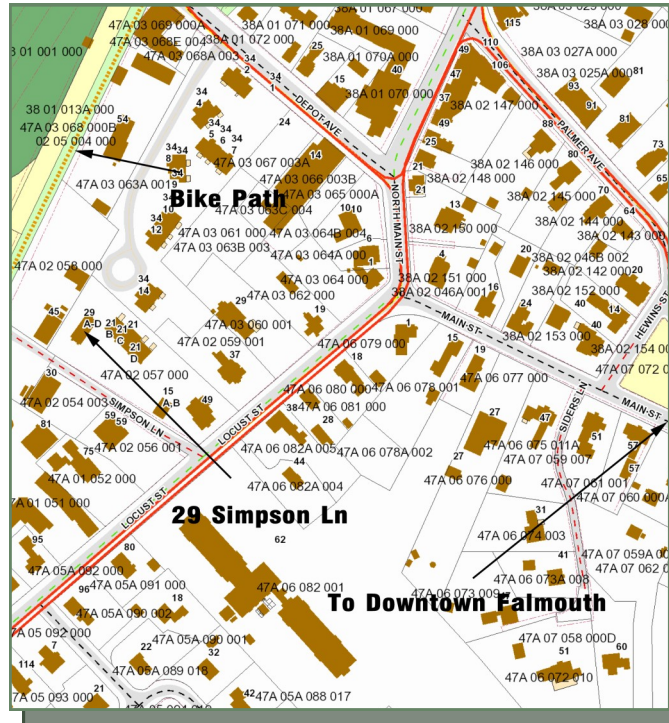


Hartel Commercial Real Estate

230 Jones Rd/Ste 6/Falmouth, MA
40 Willard St/Ste 207/Quincy, MA



Assessor Map



Property

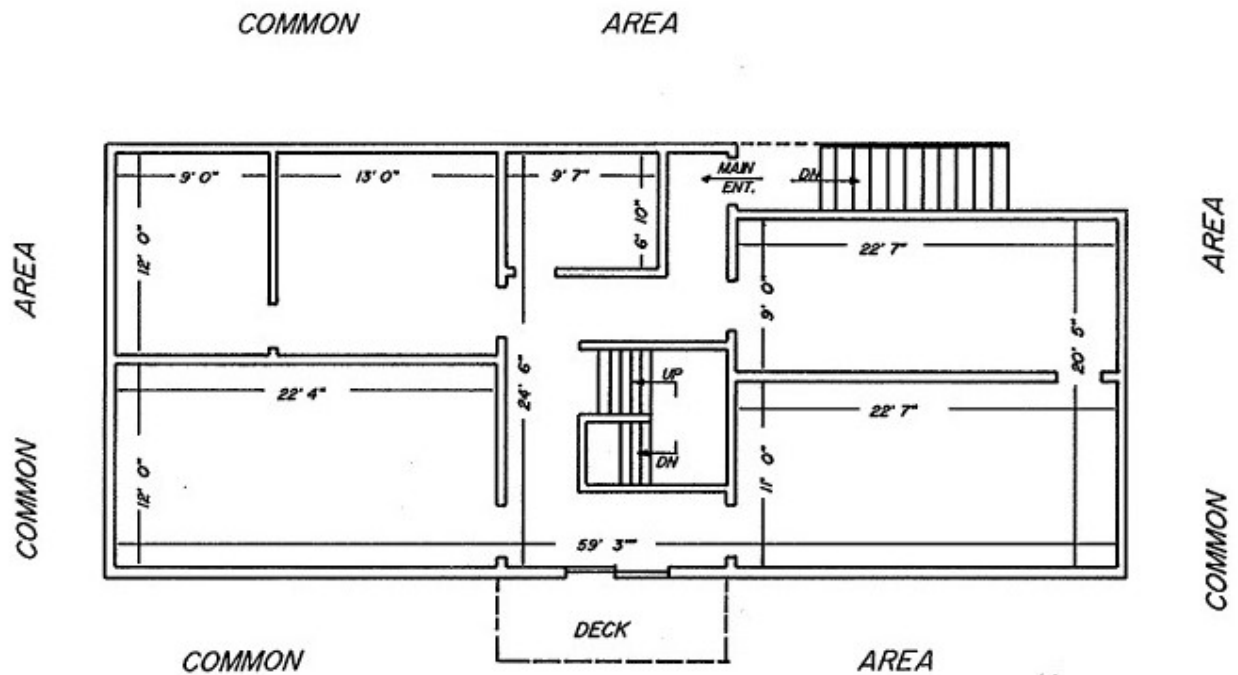
This 3,000± SF building is utilized for professional space with an entire second floor available with 1,500 SF, en suite kitchenette and common bath.

On-site parking and just minutes to Route 28, downtown Falmouth and the Bourne Bridge makes this an appealing space for a professional commercial space.



HARTEL COMMERCIAL REAL ESTATE

Strategic Real Estate Services



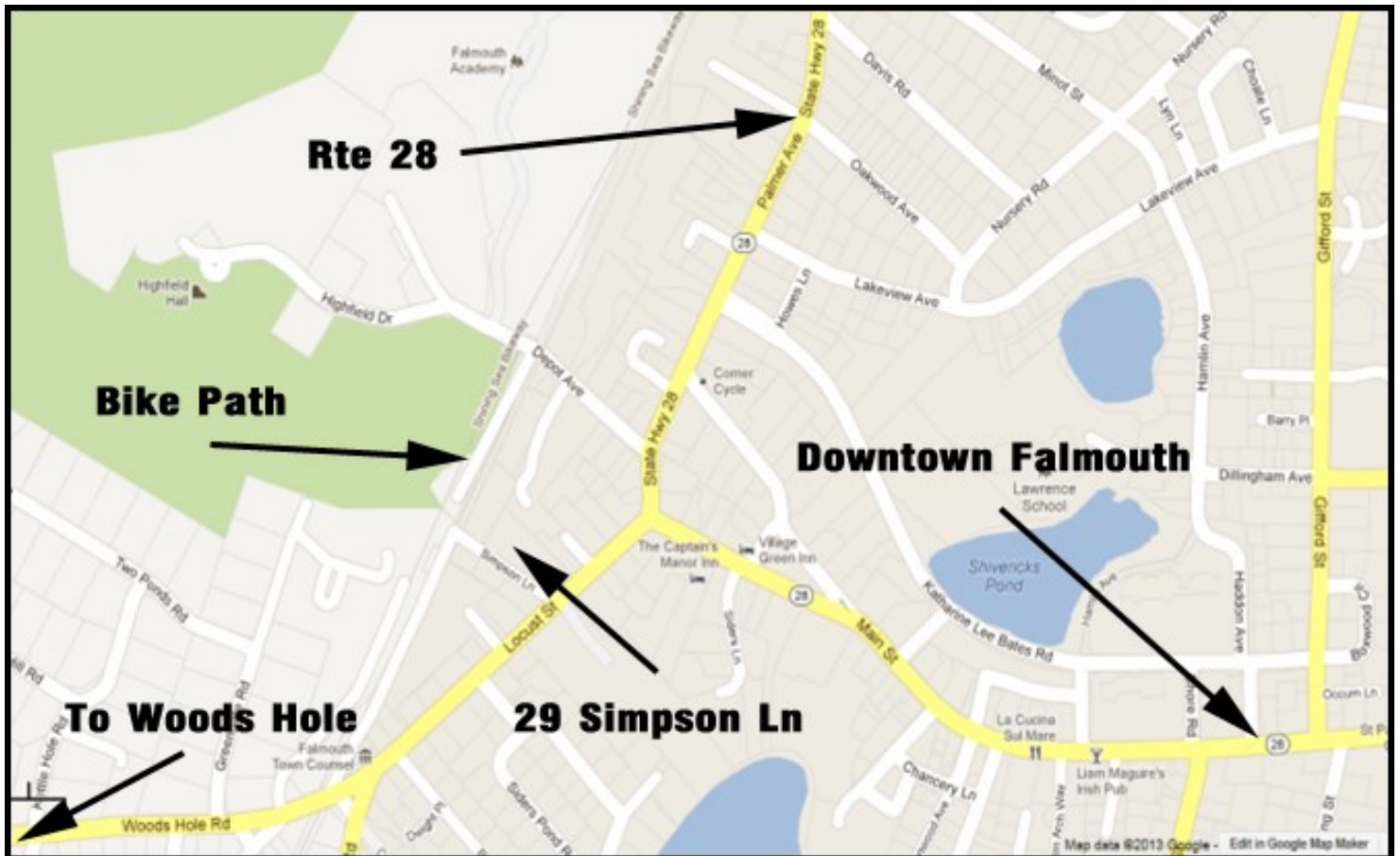
BLDG. 4 UNIT 4A
SECOND FLOOR
1,365 ± S.F.



HARTEL COMMERCIAL REAL ESTATE

Strategic Real Estate Services

MAP





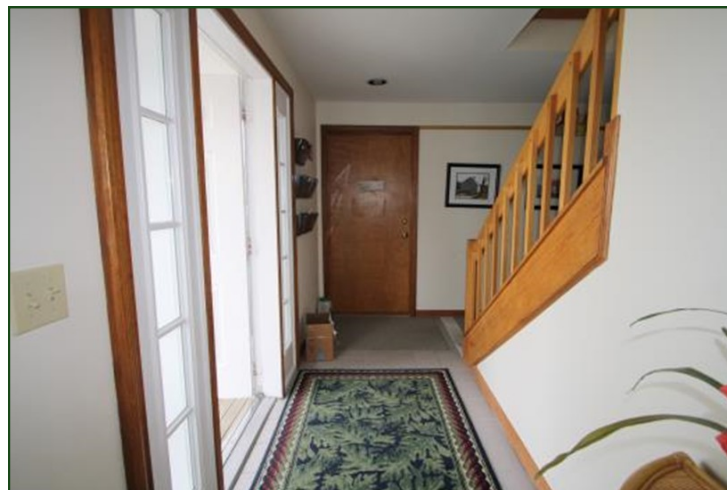
HARTEL COMMERCIAL REAL ESTATE

Strategic Real Estate Services

FRONT



ENTRY WAY



UPPER LEVEL





HARTEL COMMERCIAL REAL ESTATE

Strategic Real Estate Services

UNITS



UNITS



KITCHENETTE