



**FOR LEASE**  
**\$500/Mo.**

**450± SF ~ QUALITY OFFICE SPACE**  
**760-768 PLAIN STREET / RTE 139**  
**MARSHFIELD, MA**



**Hartel Commercial Real Estate**

**Offered by**

230 Jones Road, Unit 6, Falmouth, MA 02540 | 40 Willard Street, Unit 207, Quincy, MA 02169  
Main: 508-444-0172 | Fax: 508-548-2995  
Greg Hartel – Cell: 617-256-3169  
Email: [Greg@HartelRealty.com](mailto:Greg@HartelRealty.com) [www.HartelRealty.com](http://www.HartelRealty.com)

# FOR LEASE ~ \$500/Month



- Professional Office Use - 2<sup>nd</sup> Floor – Available July 1, 2016
- Location Adjacent to Route 3 – Exit 12
- 450± SF Space -
- Lease \$500/Month/Landlord Pays Heat/Tenant Pays Electric
- Open Bright Space
- Building Signage with On-Site Parking
- High Traffic Area with Year Round Activity

# Area Overview

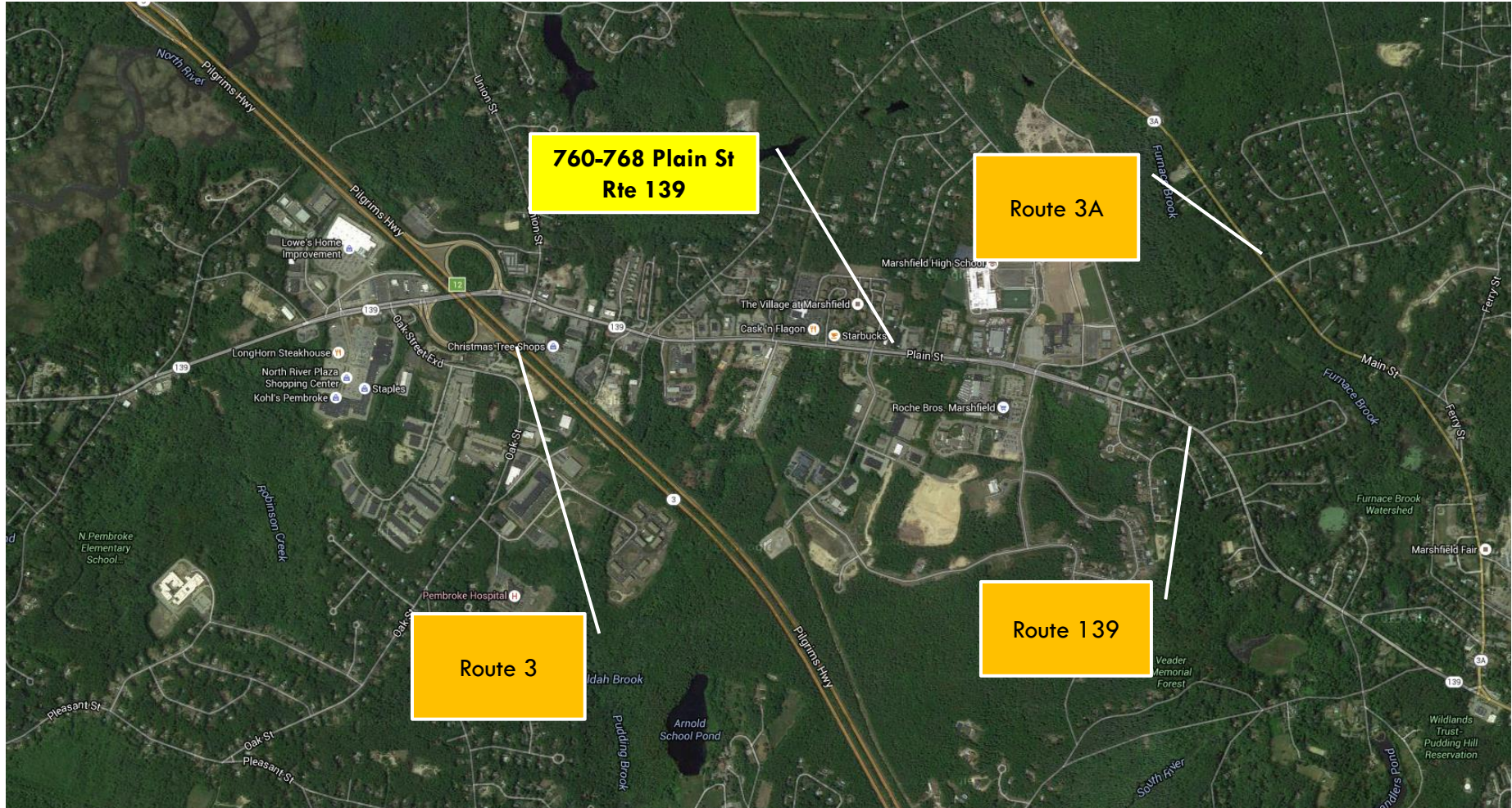
- The town of Marshfield is located 27 miles from Boston's business district in the southeastern section of Massachusetts. There is direct access to Route 3 at exit 12, less than one mile north.
- This location is in a high traffic area less than one mile from Exit 12 on Route 3. Area businesses include restaurants, office buildings, coffee shops, super markets and shopping plazas.
- This office contains 450± SF on the second floor, with on-site parking. The space is in good condition and in a good location, on Route 139, with close proximity to all area businesses and major highway, Routes 3 & 3A.

# Property Synopsis

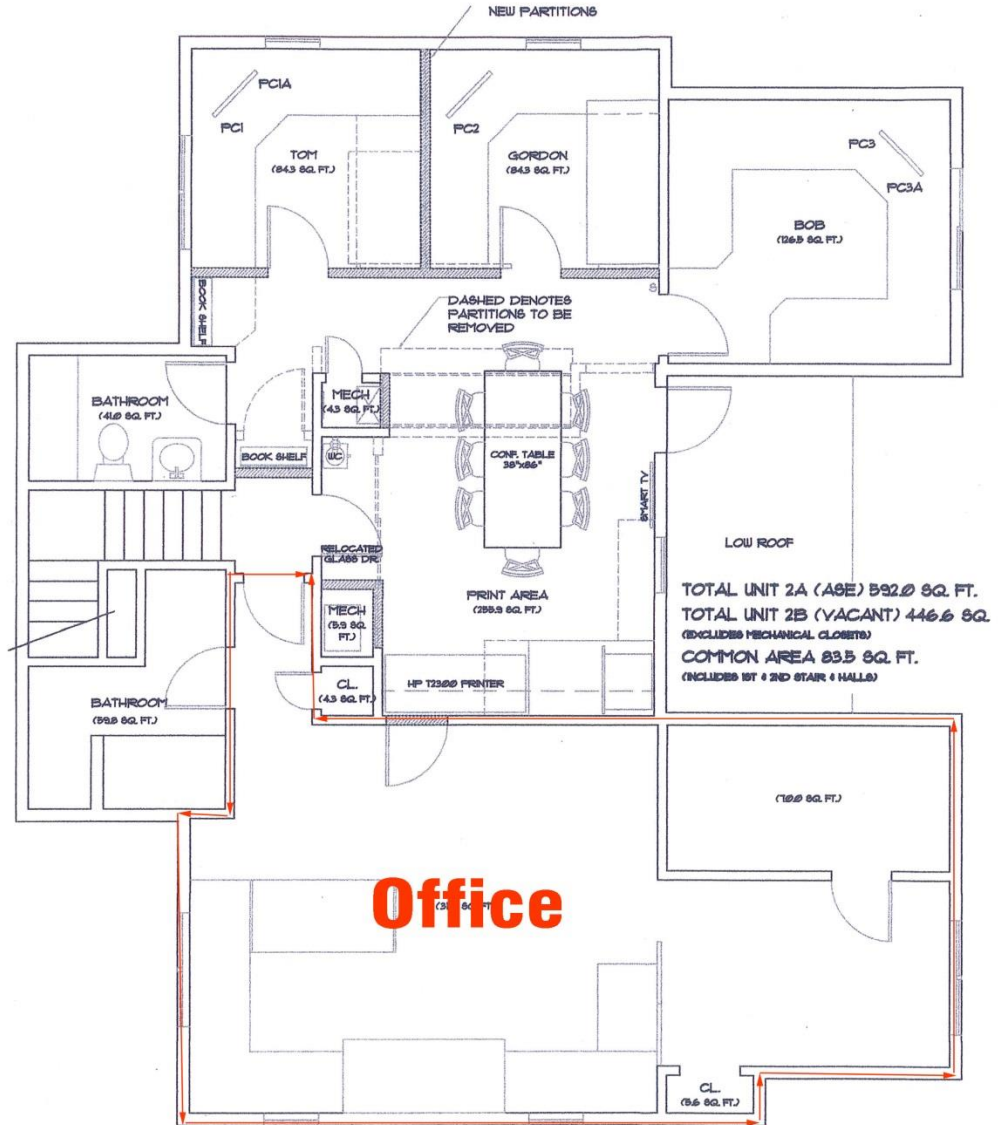
- Offered for Lease is 450± SF of Professional Office Space at 760-768 Plain Street, Route 139, in Marshfield.
- This space offers a large bright room for professional office. There is building signage giving good exposure in an already busy area of many complimentary businesses.



# Satellite



# Floor Plan





# Visuals

