



HARTEL COMMERCIAL REAL ESTATE

Strategic Real Estate Services

Excellent Mashpee Location

FOR LEASE - Available Now

17 TRINITY PLACE

FRONT UNIT A - 1,719 SF

MASHPEE, MA

\$16/SF NNN



- * High Traffic Area - Located next to Boston Interiors and Botelho Lumber
- * Rte 28 Location - Visibility on Rte 28
- * Large Open Space - Natural Light - Display Windows
- * On Site Parking



Hartel Commercial Real Estate

230 Jones Rd/Ste 6/Falmouth, MA
40 Willard St/Ste 207/Quincy, MA



HARTEL COMMERCIAL REAL ESTATE

Strategic Real Estate Services

Assessor Map



Unit	A
GLA	1,719 SF
Location	Rte 28
Zoning:	C2
Parking	Onsite



Property - Commercial Location

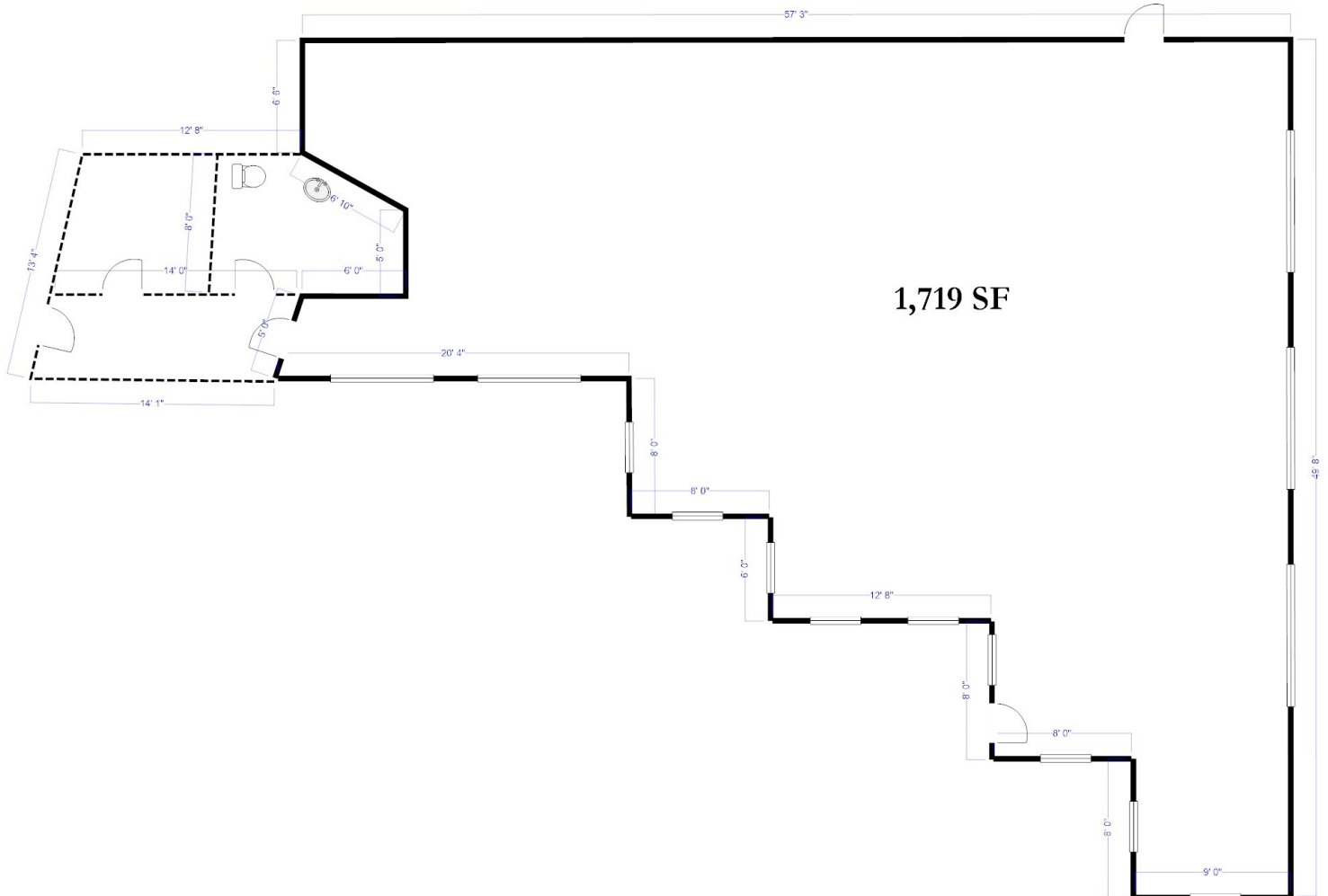
Trinity Place is located on Route 28 east of the Mashpee Rotary. Complimentary businesses include Boston Interiors, Botelho Lumber, Work Out World, Persy's Place, Professional offices, Honey Dew. The space has 1,719 SF and is For Lease at \$16/SF NNN.



HARTEL COMMERCIAL REAL ESTATE

Strategic Real Estate Services

UNIT A



Hartel Commercial Real Estate

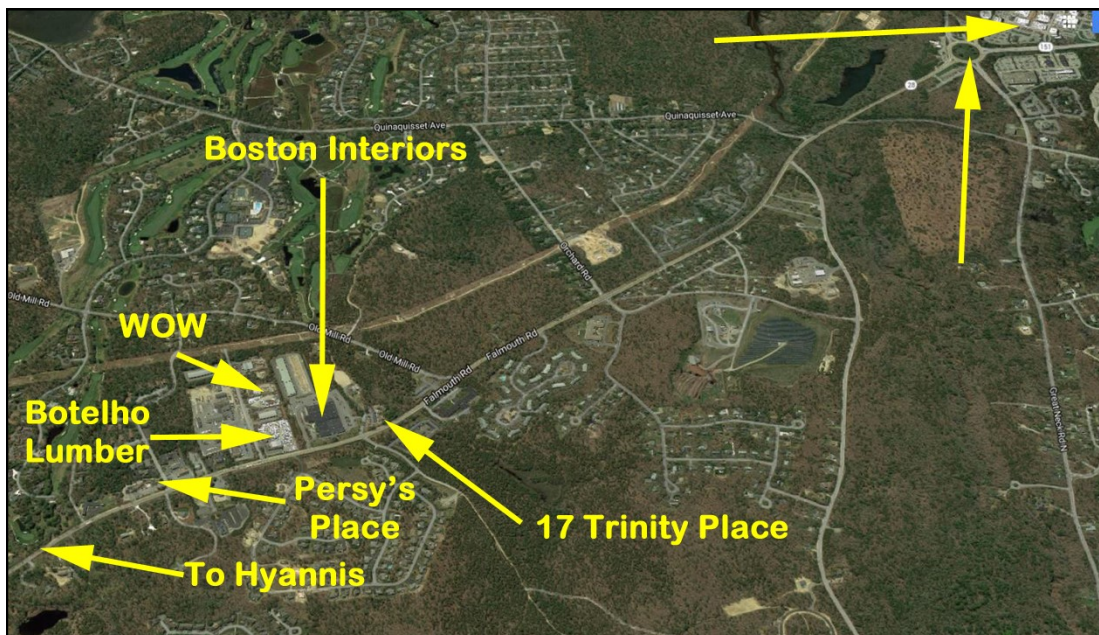
230 Jones Rd/Ste 6/Falmouth, MA
40 Willard St/Ste 207/Quincy, MA



HARTEL COMMERCIAL REAL ESTATE

Strategic Real Estate Services

SATELLITES





HARTEL COMMERCIAL REAL ESTATE

Strategic Real Estate Services

Photographs



Greg Hartel
Phone: 617-256-3169
E-mail:
Greg@HartelRealty.com

Jody Shaw
Phone: 508-566-3556
E-mail:
Jody@HartelRealty.com

230 Jones Road
Suite 6
Falmouth, MA 02540

40 Willard Street
Suite 207
Quincy, MA 02169

www.HartelRealty.com