



**681 Falmouth Rd - Units B11 & B12 - Rte 28**

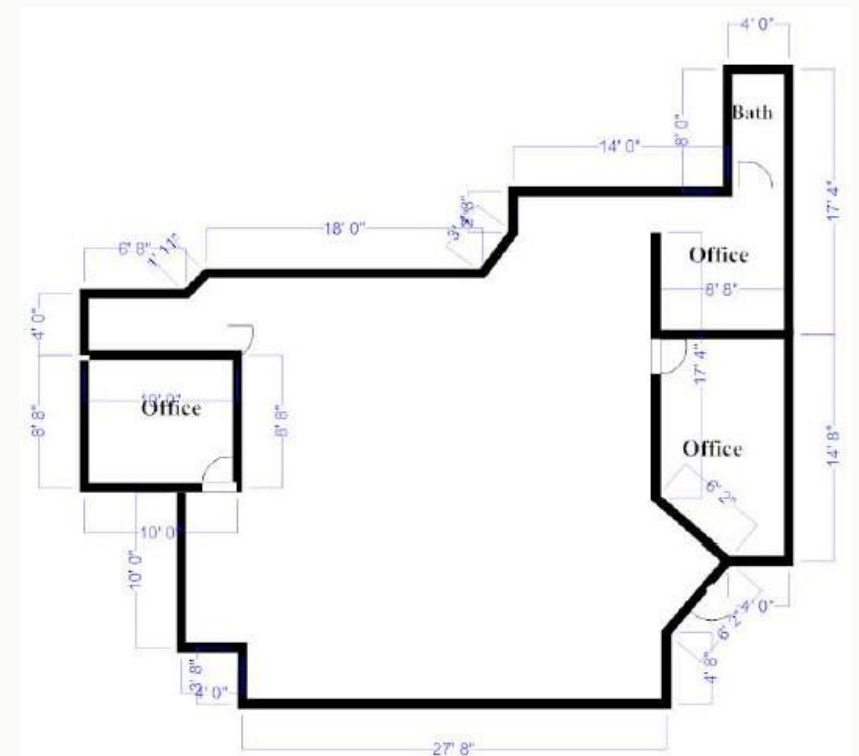
**For Lease at \$20/SF NNN**

**Office/Retail Space For Lease | 3,075± Combined SF**

Jody Shaw 508-566-3556 Jody@HartelRealty.com  
Greg Hartel 617-256-3169 Greg@HartelRealty.com



**HARTEL COMMERCIAL REAL ESTATE**  
**Falmouth**



**For Lease at \$20/SF NNN**

Close to Mashpee Commons & Direct Location on Route 28



681 Falmouth Rd, Deer Crossing Plaza, U- B11 & B12, Mashpee, MA

---



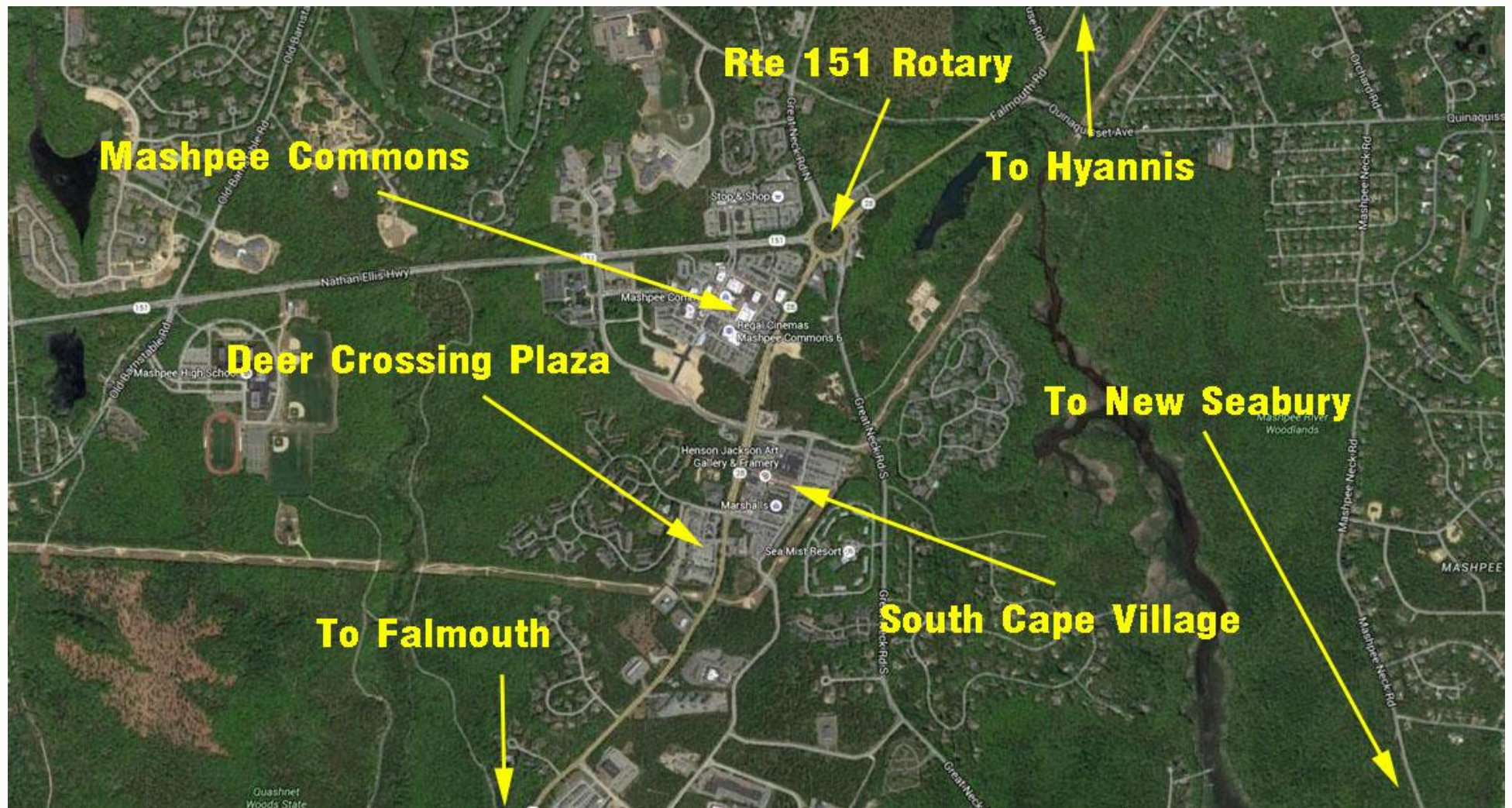
---

Satellite



681 Falmouth Rd, Deer Crossing Plaza, U- B11 & B12, Mashpee, MA

---

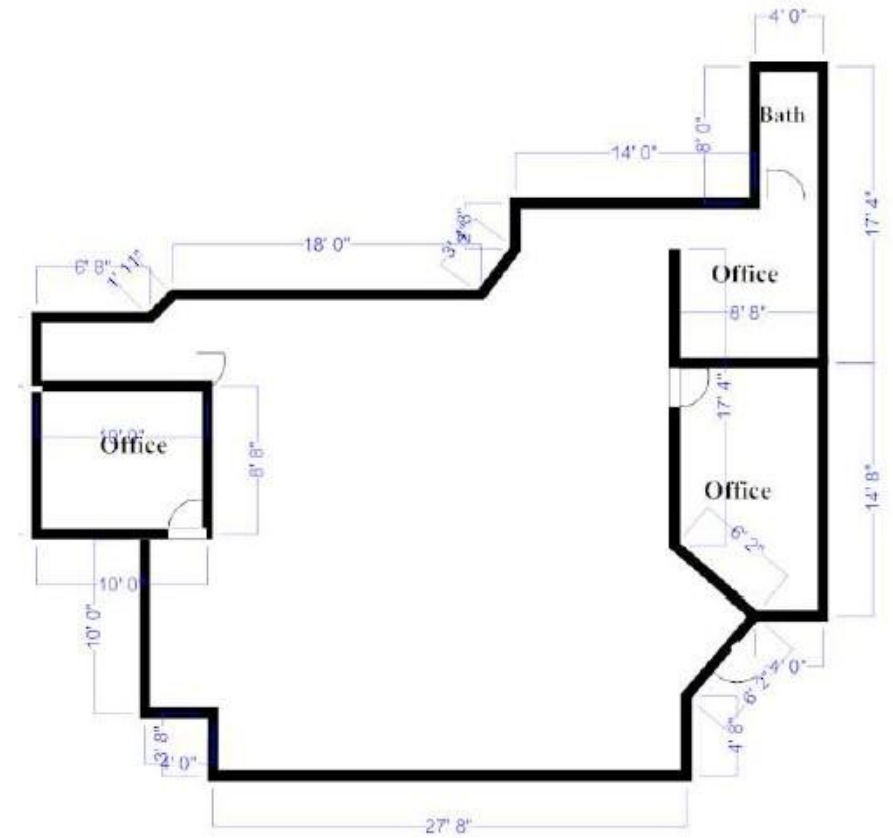


---

Neighborhood

# 681 Falmouth Rd, Deer Crossing Plaza, U- B11 & B12, Mashpee, MA

---



---

**FloorPlan B11 & B12**



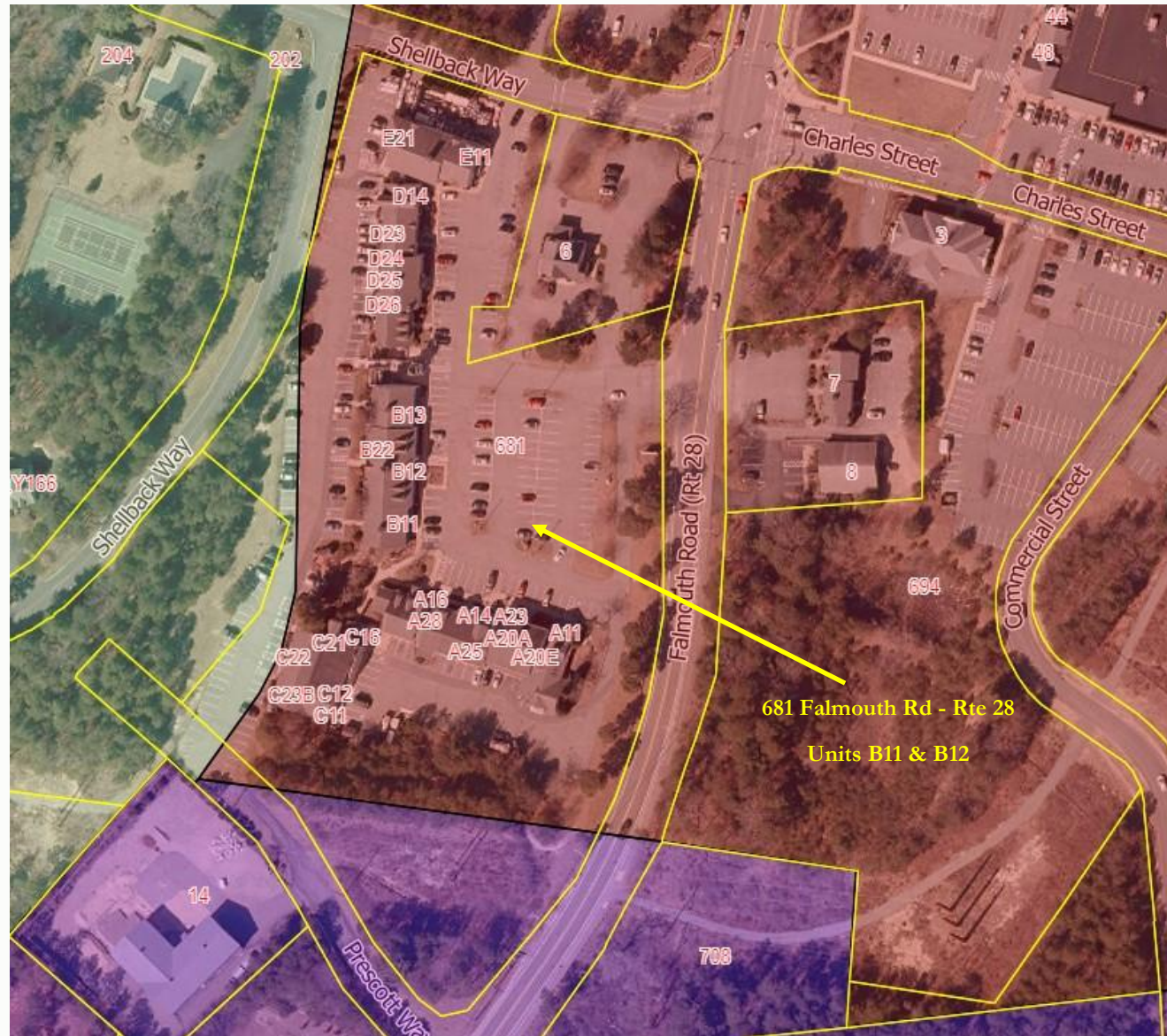
# 681 Falmouth Rd, Deer Crossing Plaza, U- B11 & B12, Mashpee, MA



Assessor

# 681 Falmouth Rd, Deer Crossing Plaza, U- B11 & B12, Mashpee, MA

---



---

**Zoning - C1 Commercial1 District**



# 681 Falmouth Rd, Deer Crossing Plaza, U- B11 & B12, Mashpee, MA

---





## 681 Falmouth Rd, Deer Crossing Plaza, U- B11 & B12, Mashpee, MA

---



681 Falmouth Rd, Deer Crossing Plaza, U- B11 & B12, Mashpee, MA

---

HARTEL COMMERCIAL REAL ESTATE

FALMOUTH

---

230 Jones Road  
Suite 6  
Falmouth MA 02540

---

Greg Hartel  
617-256-3169  
Greg@HartelRealty.com

Jody Shaw  
508-566-3556  
Jody@HartelRealty.com

Main Office  
508-444-0172  
www.HartelRealty.com

## Contacts

---

**\*DISCLAIMER:** ALL INFORMATION CONTAINED HEREIN WAS RESEARCHED AND OBTAINED BY SOURCES DEEMED TO BE RELIABLE. WE MAKE NO REPRESENTATION OR WARRANTIES OF ANY KIND DUE TO THE ACCURACY CONTAINED WITHIN THIS LISTING. PLEASE CONDUCT YOUR OWN RESEARCH OF THE PROPERTY TO VERIFY ANY AND ALL INFORMATION. WE ARE NOT RESPONSIBLE FOR ANY INFORMATION WHICH IS RELIED UPON WITHOUT FURTHER DUE DILIGENCE AND INVESTIGATION.