

FOR LEASE

Professional
Single Office
Spaces

\$850/Month
Includes Utilities

Offered by:



Hartel Commercial Real Estate

230 Jones Road
Suite 6
Falmouth, MA

40 Willard Street
Suite 207
Quincy, MA

Greg Hartel
617-256-3169

Greg@HartelRealty.com

Gretchen Halloran
508-524-9080

Gretchen@HartelRealty.com

Main Office:
508-444-0172

www.HartelRealty.com



210 WINTER STREET
SUITE 103
WEYMOUTH, MA

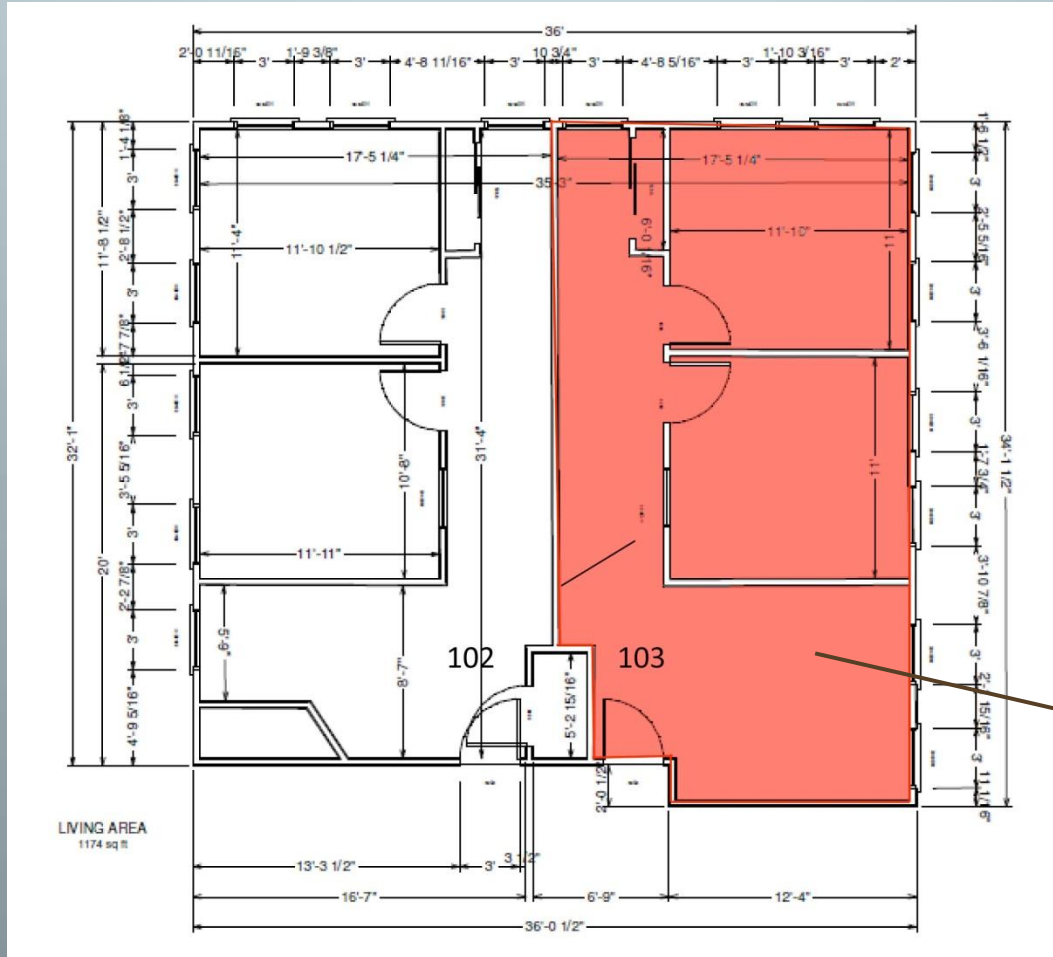
PROPERTY SYNOPSIS

- Address: 210 Winter Street
Suite 103
Weymouth, MA
- Lease / Terms: Single Office
- Baths: 2 Shared in Common Hall
- Town/Well Water: Municipal
- Town/Private Septic: Municipal
- Zoning: B1
- Parking: On-Site

AREA & COMPLEX OVERVIEW

- The Town of Weymouth is located twelve miles southeast from Boston's business district in the southeastern section of Massachusetts. There is access to Routes 3, 53 and 18 in the immediate area. Weymouth is a mature community compared to other municipalities in that it has been almost completely developed in terms of land area. This development, however, will not prevent the redevelopment of sites with new uses. Weymouth is bordered on the west by Braintree and Holbrook, south by Abington and Rockland, east by Hingham and north by North Weymouth and Massachusetts Bay.
- 210 Winter Street is located in a mixed use area of large and small retail, scattered industrial uses, medical facilities, eating establishments intermingled with residential uses. It is strategically located close to major highways and heavily travelled roads. In the center of the Winter Street and Winter Court triangle, it is accessed by curb cuts in both the front and rear.
- Suites contains single office suites accessed by the front and rear of the building via a common staircase. There is ample parking from the front and rear as well.

FloorPlan



Suite 103

GIS MAP



SATELLITE

